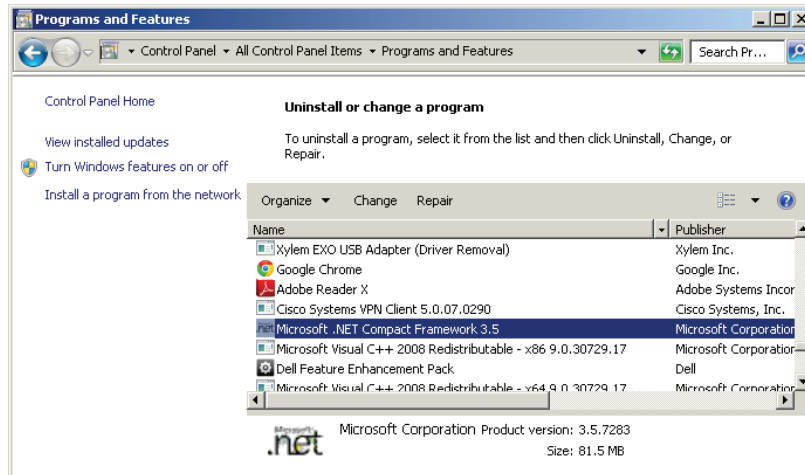


EXO™ KOR Installation Troubleshooting

Common issues associated with installing KOR:

1) If the icons in KOR are not active, or are “greyed-out”, this is a good indicator of a .NET error.

Solution: You’ll have to install Microsoft.NET to resolve this issue.



2) If you’re having trouble running or launching the KOR application, you may not have sufficient privileges to run KOR.

Solution: You will want to make sure you have **administrative rights**, or your IT department needs to set up your account so you can run KOR software as an admin.

