



ProODO™ Software Update Instructions

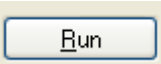
These instructions describe how to update the Professional Plus software to version 2.7. Minimum PC system requirements are:

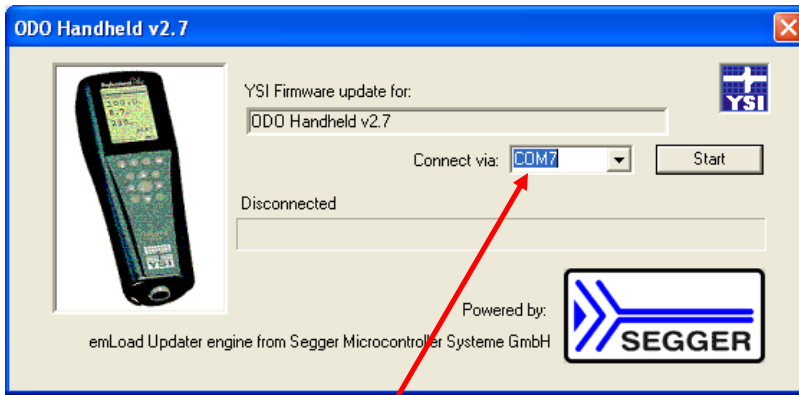
- Windows® 2000 with SP4 (minimum) or XP with SP2 (minimum) Operating System
- USB 2.0
- Microsoft .NET™ (installed with Data Manager)
- YSI USB drivers for the Professional Series Communications Saddle (installed with Data Manager)


Complete the following steps to update a ProODO handheld to software version 2.7:

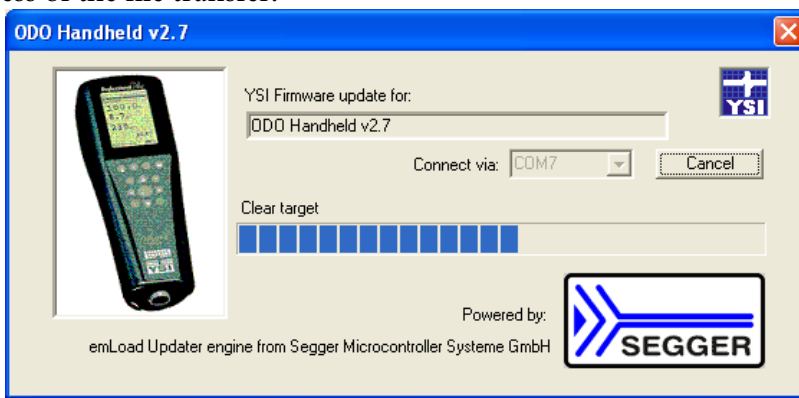
1. If Data Manager is already installed on your PC, go directly to Step 2. If not already installed, install Data Manager on your PC via the CD that was included with the instrument. This will install Microsoft .NET and the required USB drivers. After installation, connect the communication saddle to the ProODO and then connect the saddle to the PC's USB port with the USB cable provided. This will allow you to complete the USB driver installations. Windows may require you to step through two 'New Hardware Found' wizards in order to complete the installations. Once complete, remove the instrument from the saddle and disconnect the saddle from the PC.
2. From www.yssi.com, save the ProUpdater_ODOV2_7.zip file to your PC.
3. Extract the files from the zip file to a directory on your PC.
4. Attach the ProSeries saddle to the PC's USB port with the USB cable provided. Do not connect the saddle to the ProODO instrument at this time.
5. From the location you unzipped the file to, run the ProUpdater_ODOV_2_7.exe file. Depending on your version of Windows, you may get a security warning that looks similar to this:



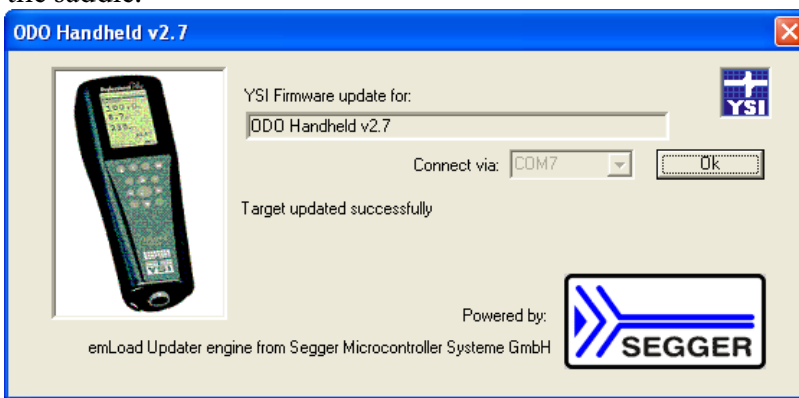
6. Select  and the following window will open.





7. Within the Updater program, select the Com Port assigned to the Professional Series saddle from the drop down menu labeled “Connect via”. If necessary, the Com Port assignment can be determined from the PC’s Device Manager. The assigned port will be titled, “Professional Series Instrument” in the PC’s Device Manager.
8. Press the Updater program’s  button.
9. With the ProODO turned off, insert the instrument into the ProSeries Communication Saddle. This will power the instrument on automatically.
10. The Updater program will begin the download process and a bar in the middle of the window will display the progress of the file transfer:



11. The update will take approximately 5 minutes. When the update is complete, the program will display “Target updated successfully”, see below. You may exit the Updater program and disconnect the instrument from the saddle.



12. The new software version can be verified by pressing the System  key on the ProODO instrument and looking at the Sw Version displayed in the System menu:

System	
Date/Time	
GLP	
Language [English]	
Radix Point [Decimal]	
Logging [Single]	
Sampling [Auto]	
Auto-Shutoff [30 min]	
Backlight [Manual]	
Sw Version: 2.7.0	
Serial #: 08KENG26A	
Unit ID [08KENG26A]	
03/19/10 03:39:12PM 