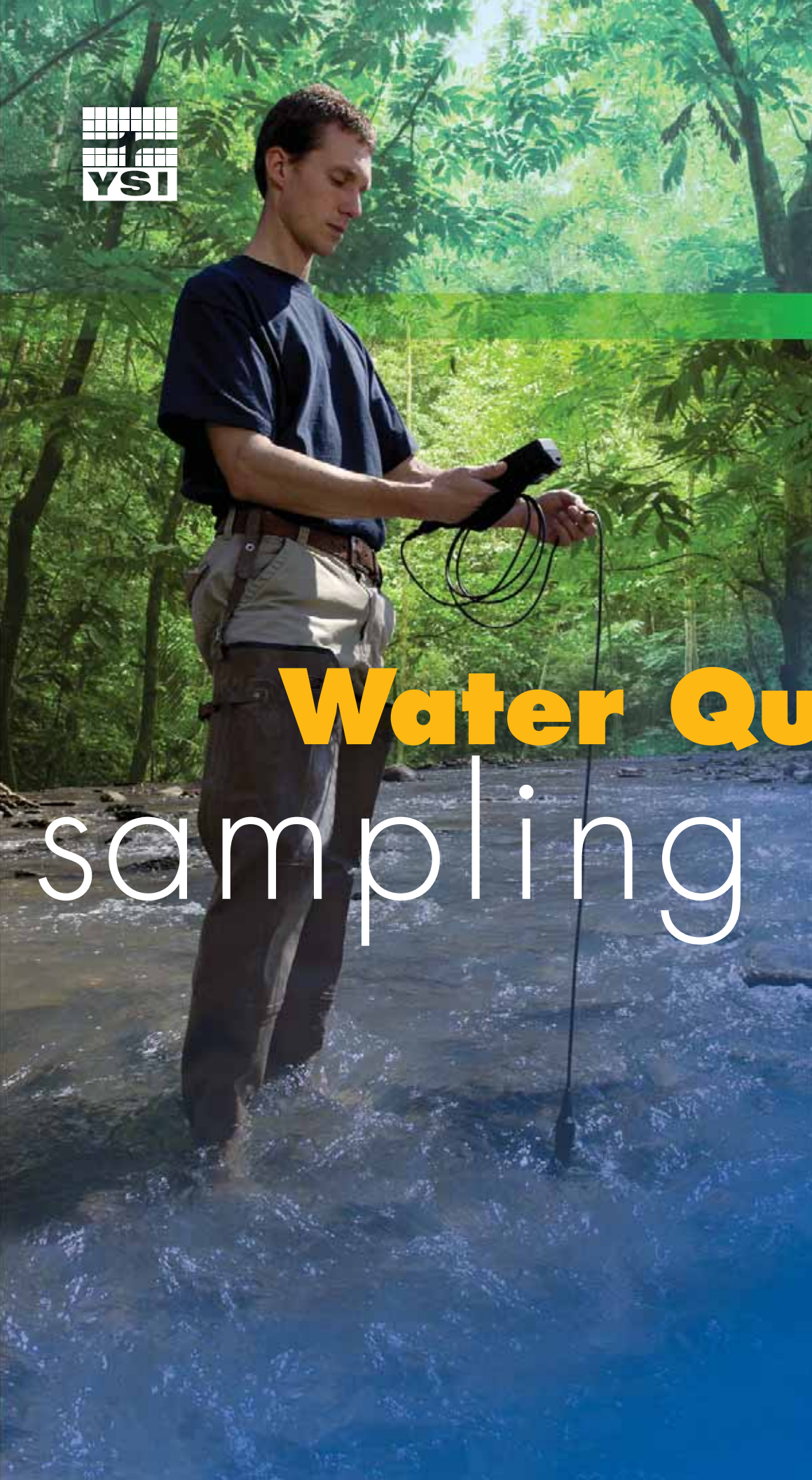




Field & Laboratory

Water Quality sampling





Surface
water

Ground
water

Wastewater

Industrial

Aquaculture

YSI Locations Worldwide

- 1 San Diego, California, USA
- 2 Baton Rouge, Louisiana, USA
- 3 St. Petersburg, Florida, USA
- 4 Yellow Springs, Ohio, USA
- 5 Marion, Massachusetts, USA
- 6 Athboy, County Meath, Ireland
- 7 Hertfordshire, England
- 8 Manama, Kingdom of Bahrain
- 9 Tokyo, Japan
- 10 Kawasaki City, Japan
- 11 Beijing, China
- 12 Qingdao, China
- 13 Shanghai, China
- 14 Hong Kong, China
- 15 Gurgaon, Haryana, India
- 16 Carina, Queensland, Australia

Technologies for lab & field



contents

Professional Plus Instrument 2

Professional Plus Order Guide 3

ProODO Dissolved Oxygen 4

Pro20 Dissolved Oxygen 5

Multiparameter Instrument 6

Dissolved Oxygen Classics 7

Level Scout Instrument 8-9

Dissolved Oxygen Laboratory 10

Conductivity Laboratory 11

EcoSense Instruments 12-13

Around the world our customers use YSI instruments to make a positive impact.

We help you meet your critical water testing requirements through our core competency of sensor technology as well as the most extensive distribution and support network in the industry.

Financial advantages include the low overall cost of ownership of a YSI product due to quality engineering, infrequent down time and repairs, and affordable parts.

Yet the number one advantage in working with YSI is direct access to our employees – knowledgeable, customer-focused technical and applications advisors committed to helping you find new and better ways to use YSI equipment.

Thank you for your interest in our company. Together we can protect our planet's most valuable natural resource.

Timothy A. Grooms

Tim Grooms
Water Quality
Product Manager



+1 937 767 7241
800 897 4151 US

Professional Series multiparameter



Professional *Plus*

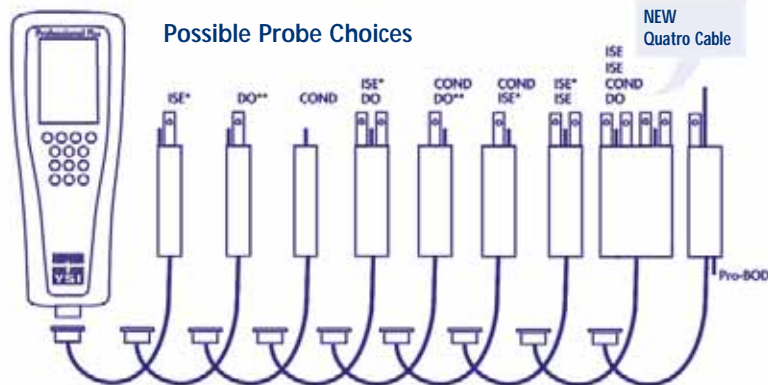
The rugged design and field-worthiness of the Professional Plus instrument allows you to perform your job with confidence even in the harshest field conditions and with the lowest overall cost of ownership. Interchangeable probes and cables reduce down-time and keep the Pro Plus ready whenever and wherever you are - field or lab.

This compact handheld includes multiple languages, detailed GLP data, on-screen Help functionality, auto-buffer recognition, mil-spec connectors, re-cal prompts, auto-stable and security passwords to help make your job easier.



Professional Plus instrument shown with 6051030-1 cable

- Backlit display and keypad
- IP-67 waterproof instrument with 3-year warranty; 2-year cable warranty
- DO, pH, Conductivity, ORP, Ammonium, Nitrate, Chloride, Salinity, Total Dissolved Solids, Barometric Pressure, Resistivity
- 5,000 data-set memory with GLP event logging
- Interval or single-event logging capability
- Easy-to-use software to manage all your data



* Choice of ISE; pH, ORP, pH/ORP (not recommended on the 6051010 or 605790 cables)
Choice of ISE; Ammonium, Nitrate, or Chloride for fresh water only

** Choice of DO; Galvanic, Polarographic

***Lab-grade pH and ORP cable/probe options available

X= Choice of cable length: 1, 4, 10, 20, 30-meter all (up to 100-meters on 20-X only)

YSI Professional Plus Order Guide

Applications

Surface water, Wastewater, Aquaculture, Groundwater

Parameters

DO, pH, Temperature, ORP, Conductivity, Ammonium, Chloride, Nitrate, Salinity

Data Manager Software included with purchase

- Easy-to-use software to manage all your data, set up instruments, or conduct real-time studies
- View, print or export graphical and tabular data
- USB connection also powers the instrument
- View and print GLP data



Step 1: Order Instrument

(instrument 6050000 includes Data Manager software, the ProComm II communications saddle, and USB cable)

Step 2: Order Cable(s)*

(all cables include temperature; cables over 1-meter include cable management kit)

60510-1, 4, 10, 20 or 30-meter	ISE**/temp	605790-1, 4, 10, 20 or 30-meter	ISE/ISE/DO/conductivity
60520-1, 4, 10, 20, 30 or 100-meter***	DO/temp	605107	1-meter single-junction probe & cable for pH/temp
60530-1, 4, 10, 20 or 30-meter	conductivity/temp	605177	4-meter single-junction probe & cable for pH/temp
6051010-1, 4, 10, 20 or 30-meter	ISE/ISE/temp	605108	1-meter single-junction probe & cable for ORP/temp
6051020-1, 4, 10, 20 or 30-meter	ISE/DO/temp	605178	4-meter single-junction probe & cable for ORP/temp
6051030-1, 4, 10, 20 or 30-meter	ISE/conductivity/temp	605109	1-meter single-junction probe & cable for pH/ORP/temp
6052030-1, 4, 10, 20 or 30-meter	DO/conductivity	605179	4-meter single-junction probe & cable for pH/ORP/temp

Step 3: Order Probe(s)

605202	Galvanic DO	605103	pH/ORP combination (ISE)****
605203	Polarographic DO	605104	Ammonium (ISE)
605780	Self-stirring BOD (2-meter cable included)	605105	Chloride (ISE)
605101	pH (ISE)	605106	Nitrate (ISE)
605102	ORP (ISE)		

Step 4: Order Solutions

3161	1,000 µs/cm conductivity solution (quart)	3842	10 mg/L ammonium solution (500 mL)
3163	10,000 µs/cm conductivity solution (quart)	3843	100 mg/L ammonium solution (500 mL)
3169	50,000 µs/cm conductivity solution (8 pints)	3885	1 mg/L nitrate solution (500 mL)
3682	Zobell, ORP solution (125 mL)	3886	10 mg/L nitrate solution (500 mL)
3824	pH 4, 7, 10 buffers (2 pints each)	3887	100 mg/L nitrate solution (500 mL)
3841	1 mg/L ammonium solution (500 mL)	5580	Confidence Solution® to verify pH, ORP and conductivity data

Step 5: Order Accessories

603059	Flow Cell, Standard, 203 mL	603069	Belt Clip
603077	Flow Cell Kit, 1 or 2 Port Probe (includes 603059 & 603078)	063517	Ultra Clamp
606850	Quatro Cable Flow Cell	063507	Tripod
603078	Flow Cell Adapter, Single Port	603062	Cable Management Kit
603056	Flow Cell Mounting Spike	605978	Weight, Probe/Cable, 4.9 oz.
603075	Carrying Case, Soft-Sided	063019	Weight, Probe/Cable, 24 oz., 3"
603074	Carrying Case, Hard-Sided	063020	Weight, Probe/Cable, 51 oz., 6"

*Cables with conductivity include probe (no need to order conductivity probe) **ISEs include pH, ORP, Ammonium, Nitrate, Chloride
 Special order cables in 10-meter increments up to 100-meter available *Not recommended on 6051010 or 605790 cables. Only pH would appear.

Accessories

Visit YSI.com/accessories



605203 Polarographic DO



603059 Flow Cell



603074



603075



603069 Belt Clip



063507 Tripod



603062 Cable Management Kit



605978 Cable Weights

Professional Series dissolved oxygen

ProODO

The ProODOTM is the best hand-held optical dissolved oxygen instrument on the market. Its combination of versatility, field-worthy durability, and data management are second to none. YSI employee owners have verified the ProODO's rugged design with a water-proof rating, and rigorous drop, cable flex, and strength tests. You'll receive extreme confidence with every purchase. The feature set in this instrument is so extensive, we encourage you to visit ysi.com/proODO or contact us to learn more.



ProODO instrument shown with 1-meter cable



New Optical BOD Probe

ODO
Optical DO

- Optical, luminescent technology
- Tough, field-worthy design
- Low maintenance
- Smart, data management with 5,000 data-set file and site list memory with Data Manager desktop software
- No flow requirement/Non-consumptive
- Smart sensor/d•i•g•i•t•a•l design
- Probe fits standard 300-mL BOD bottles

Data Manager Software included with purchase

- Easy-to-use software to manage all your data, set up instruments, or conduct real-time studies
- View, print or export graphical and tabular data
- USB connection also powers the instrument
- View and print GLP data



ProODO



Step 1: Order Instrument

(Instrument 626281 includes Data Manager software, the ProComm II communications saddle, and USB cable)

Step 2: Order Cables

626250-1, 4, 10, 20, 30, 40, 50, 60 or 100-meter* (sensors included)

626400-(Optical BOD) US/Japanese version

626401-(Optical BOD) International version

ysi.com/proODO
ysi.com/proOBOD

800 897 4151 US

WE KNOW™ D.O.



Applications

Surface water, Wastewater,
Aquaculture, Groundwater

Parameters

DO, Temperature



YSI Pro20

Rugged and reliable, the YSI Pro20 provides everything you need in a handheld dissolved oxygen instrument. User-replaceable probes and cables, 50 data set memory, and convenient One Touch Cal feature makes it user-friendly. Mil-spec (military spec) connectors, IP-67 waterproof and rubber over-molded case, and 1-meter drop tests ensure the instrument remains in your hands to provide years of sampling in the harshest conditions.

- **3-year instrument warranty; 2-year cable**
- **One Touch Cal allows calibrations within 3 seconds**
- **50 data set memory ensures data integrity**
- **Graphic, backlit display and glow-in-the-dark keypad**
- **Choose either Galvanic or Polarographic sensors**
- **Quickest response times/PE cap membranes**
- **Languages - English, Spanish, French, German**



Pro20
instrument shown
with 1-meter cable

YSI.com/pro20

Pro20

Step 1: Order Instrument

6050020 Pro20 Instrument only



Step 2: Order Cables

60520-1, 4, 10, 20, 30 or 100-meter*

Step 3: Order Probe

605202 Galvanic DO 605203 Polarographic DO 605780 Self-stirring BOD (includes 2-meter cable)

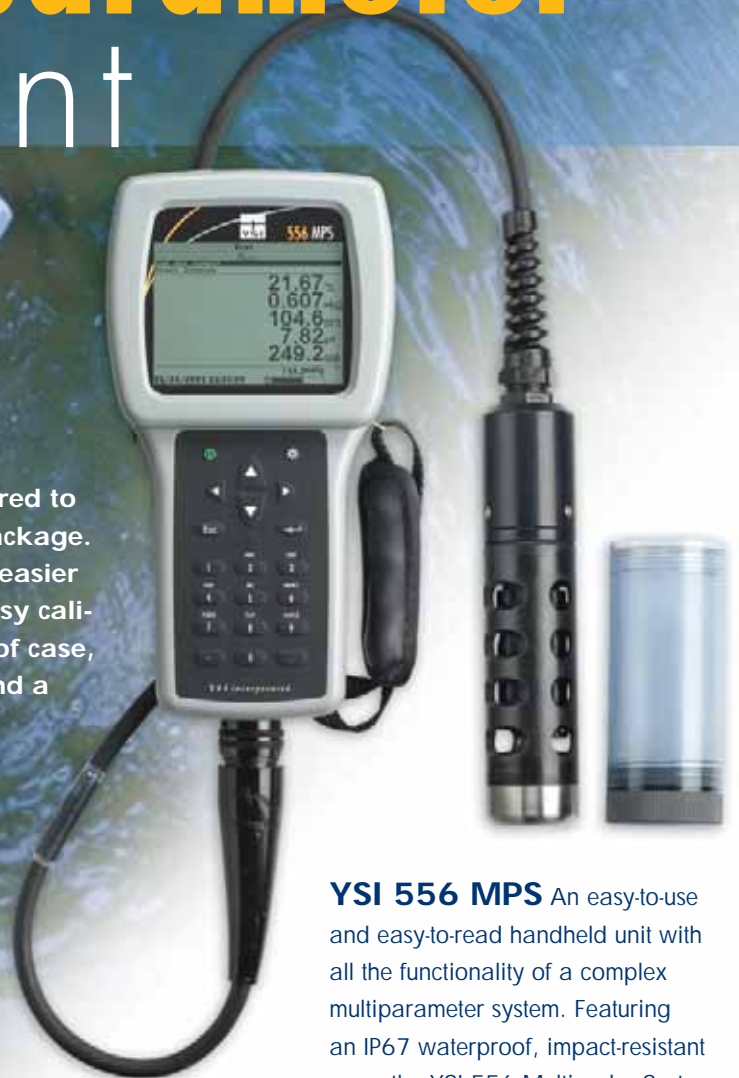


*Special order cables in 10-meter increments up to 100-meters available



Multiparameter instrument

YSI's 556 Multiparameter instrument is engineered to deliver accurate measurements in a compact package. It's packed with features that make your work easier and more convenient; such as fast response, easy calibration, easy-to-read backlit display, waterproof case, large memory capacity, one-hand operation, and a storage chamber to keep probes safe.



YSI 556 MPS An easy-to-use and easy-to-read handheld unit with all the functionality of a complex multiparameter system. Featuring an IP67 waterproof, impact-resistant case, the YSI 556 Multiprobe System simultaneously displays dissolved oxygen, pH, conductivity, temperature, ORP, salinity, and TDS. Barometer is optional. With 512K memory, the instrument can store up to 49,000 data sets with time and date stamp. Compatible with EcoWatch® for Windows® data analysis software. GLP conforming. Available with 4, 10, and 20 m cables.



5080 Carrying Case (optional)

- rugged, waterproof, hard Pelican™ case
- high-impact protective foam insert
- foam cutouts for instrument and DO probe accessories
- carved pocket for manual



5061 Soft Carrying Case (standard) comes with 556

YSI.com

YSI.com/556



Applications

Surface water, Beverages, Wastewater, Aquaculture

Parameters

DO, Temperature

Classics for dissolved oxygen

YSI Classics — portable, easy-to-use, and rugged — are versatile instruments for lab and field that continue to satisfy customers worldwide.



YSI 52

YSI 550A

YSI 58

YSI 58 DO Meter

The YSI 58 DO instrument displays oxygen concentrations in two temperature-compensated modes on an LCD. With broad ranges, this meter is especially convenient for measuring super-saturated water, such as samples with oxygen-producing algae. The instrument offers manual salinity correction, recorder output, and operation from line power or batteries. The case also holds batteries for an optional field stirrer.

YSI 52 DO Meter

The portable YSI 52 is easy to use for field and lab work. Internal memory stores up to 70 readings. An easy-to-read LCD provides clear, simultaneous display of time, temperature, and % and mg/L oxygen. Standard RS-232 port with communications software provides PC connectivity. Six D cell batteries provide hours of operation. Packaged in a water-resistant case.

YSI 550A Waterproof, rugged, and reliable, the YSI 550A is designed for the field with innovative field-replaceable DO electrodes, over 2,000 hours battery life, CE compliance, a 3-year warranty on the instrument, and a 1-year warranty on the replaceable electrodes. Measure temperature and dissolved oxygen simultaneously, and replace the DO electrode quickly and easily. Uses easy-to-install cap membranes.

*For a full list of accessories, visit YSI.com/accessories and for information on classic handhelds go to www.ysi.com

level and temperature

Level measurements provide the fundamental source of knowledge for highly dynamic ground water systems. Hydrologic stresses on these systems affect recharge, storage, and discharge rates. Long-term water level measurements provide data to evaluate, develop, design, implement, and accurately monitor the effectiveness of ground water use and management decisions.

YSI's Level Scout provides highly accurate level measurements with multiple logging options. The Level Scout's pressure sensor technology, low power consumption, rugged housing and connectors, and easy data management make it ideal for your next level monitoring application.

- **User-replaceable batteries prevents costly down-time and potential loss of valuable data**
- **User-selectable sampling rates allow you to take readings as fast as 15 per second**
- **Use one instrument for various applications with multiple data logging modes that include linear, linear averaging, event triggered, and logarithmic**
- **Instrument firmware can be upgraded from our web site keeping you from sending in your instruments**

level | **scout**

The YSI Level Scout is available as

- absolute or vented
- stainless steel or titanium
- 2 mb (+ 1.0 °C) or
4 mb (+ 0.2 °C) of memory



Connect the Level Scout to your laptop or pocket PC in the field to view real-time data, setup logging tests, and download logged data.

YSI.com

8 YSI.com/levelscout



Applications

Ground water/aquifers, pump/slug tests, surface water, wetlands, resource management, soil vapor extraction tests, leachate

Parameters

Level & Temperature

Accessories

Visit YSI.com/accessories

Desiccant Vent filter

Communication Connector (RS-485)

DC Power Connector Cable hanger

Level Scout



Model 710 (stainless steel) or

Model 730 (titanium)

Polyurethane cables

Model 720 (stainless steel) or

Model 740 (titanium)

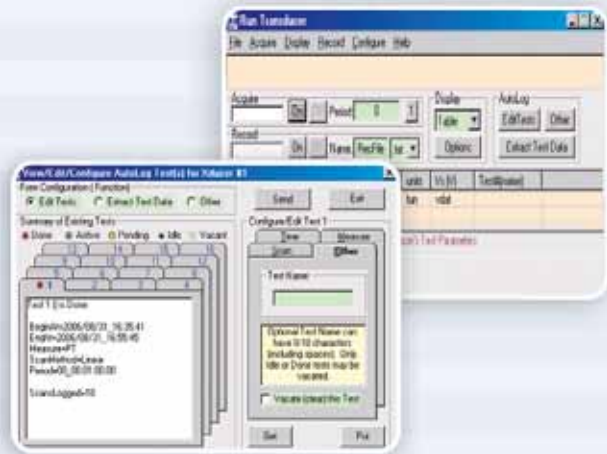
ETFE cables for contaminated application

Model 785

4-inch vented, locking well cap. Includes carabiner for attaching equipment. Model 782 for 2-inch wells



Model 785



Data Scout Advanced

Each Level Scout comes with 3 software programs to meet your application needs. Data Scout desktop software allows you to configure the Level Scout, set up to 16 independent tests, view real-time data, download logged data, and setup alarms. Data

Scout Advanced desktop software can perform all of these tasks plus display tabular and graphical data, correlate barometer data, and convert pressure and temperature units of previously logged data. Data Scout Mobile can be used on pocket PC devices.

Dissolved Oxygen Laboratory

Save time and increase efficiency with the YSI 5000 Series. These microprocessor-based lab instruments store 100 sets of data and are equipped with an RS-232 interface for direct link to your computer. They can be upgraded via disk or YSI's website — eliminating the need to ship units back to YSI. Features auto-calibration, large graphic display, and low-profile keypad.



YSI 5000

YSI 5100

The YSI 5010 Self-Stirring BOD Probe

The YSI 5010 provides continuous stirring for accurate measurement and faster response time.

International BOD probes are available. Contact your YSI Dealer for information.



YSI 5100 DO Meter

Receive ultimate performance and flexibility with auto-calibration and built-in OUR/SOUR* software — valuable process control tools for indicating the biological activity of microorganisms used in treatments.

- Built-in barometer for pressure-compensated calibration
- Programmable auto-stabilization
- Integrity function indicates membrane damage
- Bar code compatibility eliminates need to maintain bench sheets by hand
- BOD Analyst™ for Windows®
- Real-time clock
- RS-232

YSI 5000 DO Meter Ease of use is highlighted by menu-driven operation; a large, liquid-crystal display; the use of auto-stabilization to predetermine a stable reading; and audio and tactile keypad responses for reducing errors and uncertainty. And with YSI BOD Analyst™ for Windows®, you can perform BOD calculations and transfer control to your computer's keypad.

* The Specific Oxygen Uptake Rate (SOUR) is the method many wastewater treatment plants use to show compliance with U.S. EPA regulations part 503 for vector attraction in biosolids. Many plants now use both SOUR and Oxygen Uptake Rate (OUR) for process control.



Applications

Food & Beverage, Surface water, Wastewater, Industrial, Pharmaceutical, Education

Parameters

DO, Temperature, Conductivity

Conductivity Laboratory



YSI 3100

YSI 3200

YSI 3200 Conductivity Meter

Get unmatched accuracy for ultrapure water in demanding applications such as pharmaceuticals and clean rooms. Multi-point calibration lets you measure a variety of samples with the same cell. Also features high/low alarms for process applications and exclusive Resistance Ratio Technology™.

Measurements include:

- Conductivity
- Resistivity
- Salinity
- Total Dissolved Solids
- Temperature

YSI 3100 Conductivity Meter

High-accuracy measurements for basic conductivity needs. Uses forced-current technology. Includes direct-reading digital display, adjustable temperature coefficient, and automatic temperature compensation.

Measurements include:

- Conductivity • Salinity • Temperature



NIST-Traceable Resistor Sets

More precise than common resistors and able to optimize instrument performance, the YSI 3166 Resistor Sets are characterized for AC and DC, and are mounted on banana plugs for easy use.

EcoSense instruments

Handhelds

Like all EcoSense instruments, the pH100, DO200 and the EC300 are designed for affordable, simple, uncomplicated operation in a multitude of applications.



Instruments and cables sold separately. Kits also available.

Pens

The ultra-compact pH10 and ORP15 pen-style instruments are housed in waterproof cases and include a graphic display with on-screen instructions.



Photometers

With the 9300 and 9500 photometers you can eliminate sample preservation by taking your portable, waterproof instruments to the field to perform the analysis onsite. Simple. Convenient. Accurate.



OK, we get it. Sometimes your budget won't allow for a higher priced instrument with more features or benefits. So you need a basic instrument to do your job without sacrificing data quality. Our EcoSense line of products are simple, easy-to-use, straight-forward products. And hey, they still have some pretty good features. Visit YSIEcoSense.com to download information or place an order.

The **pH100**'s low cost of ownership is highlighted by its economical list price, competitively priced probes, and rugged reliability (meaning less down time).

The **DO200** offers fast Dissolved Oxygen response times in wastewater, surface water and aquaculture applications.

EC300 is designed for affordable, simple, one-handed operation in a multitude of applications. It measures Conductivity, Specific Conductance, Salinity, TDS, and Temperature.

Standard Features:

- Watertight case meets IP-65 specs
- 1-year instrument warranty
- CE compliance
- Submersible waterproof cables
- Large displays
- Quick, simple calibrations

The **pH10** is the perfect instrument for economical spot sampling of pH and Temperature in applications such as wastewater, surface water, aquaculture, hydroponics, pools, and education.

The **ORP15** offers accurate, low-cost measurement of ORP (absolute and relative mV) and temperature. Measuring these parameters in a pen-style instrument that's also simple and compact means you get the most convenient sampling method available

Standard Features:

- Waterproof case meets IP-67 specs
- 1-year instrument warranty
- Replaceable electrode
- 50 data-set memory
- Hold feature locks stable readings on display
- Graphic display with on-screen instructions

The **YSI 9300** and **9500** both feature a graphic, backlit display, on-screen instructions, a waterproof case, various diameter sample tube holder, multiple languages, 100+ test options, and direct reading concentrations.

The **YSI 9500** has additional features that include a waterproof USB that can also be used for power, 500 data-set memory, and several user-selectable options.

Standard Features:

- On-screen instructions walk you through the tests improving data quality and saving time
- Long shelf life reagents are safe and can be shipped as nonhazardous
- IP-67 waterproof cases enables instrument use in harsh field conditions
- Includes accessories and hard-sided carrying case to protect your investment



YSI Environmental

Pure Data for a Healthy Planet.®



To order or for more information,
contact YSI Environmental.

+1 937 767 7241
www.YSI.com

YSI Environmental
1700/1725 Brannum Lane
Yellow Springs, Ohio 45387
+1 937 767 7241
+1 937 767 9353 fax
environmental@ysi.com

SonTek/YSI
+1 858 546 8327
inquiry@SonTek.com

YSI Integrated Systems
& Services
+1 508 748 0366
systems@ysi.com

AMJ Environmental
+1 727 565 2201
info@amjenviro.com

YSI Australia
+61 7 390 17223
acorbett@ysi.com

YSI Gulf Coast
+1 225 753 2650
gulfcoast@ysi.com

ISO 9001
ISO 14001

(Yellow Springs facility)

ProODO, ODO, BOD Analyst and Resistance Ratio Technology are trademarks and We Know D.O., Pure Data for a Healthy Planet, EcoSense and Who's Minding the Planet are registered trademarks of YSI Incorporated. Pelican is a trademark of Pelican Products Inc. Pyrex is a trademark of Corning. Windows is a registered trademark of Microsoft Corporation. YouTube is a registered trademark.

©2009 YSI Incorporated
Printed on recycled paper in USA
W37-11 0510

YSI incorporated
Who's Minding
the Planet?

YSI.com

YSI Hydrodata
European Support Centre
+44 1462 673581
europe@ysi.com
ireland@ysi.com

YSI (Hong Kong) Limited
+852 2891 8154
hongkong@ysi.com

YSI South Asia
+91 989 122 0639
sham@ysi.com

YSI Middle East (Bahrain)
+973 17536222
halsalem@ysi.com

YSI/Nanotech (Japan)
+81 44 222 0009
nanotech@ysi.com

YSI China
+86 10 5203 9675
beijing@ysi-china.com

Application Notes

visit ysi.com/applications

A557 Silver Streak Bass (Aquaculture)

A567 ORP in Wastewater (Wastewater)

A570 Busseron Creek Watershed (Surface Water)

A572 Miami Conservancy District
(Surface Water/Groundwater)

WE KNOW™



visit ysi.com/weknowDO

View Dissolved Oxygen technology
webinars, videos, selection guides,
product spec sheets and more at our
dissolved oxygen resource page.

Videos

visit youtube.com/ysiinc

View product demos, field studies,
and instrument installations

Follow YSI on:

www.facebook.com/myYSI



www.twitter.com/ysiinc



ECO CALCULATIONS REPORT				
YSI, Inc. saved the following resources by using U2:XG made with 30% post-consumer recovered fiber.				
trees	energy	greenhouse gas	waste water	solid waste
2	1.4 million BTUs	706.56 lbs CO ₂	754 gal	125 lbs
U2:XG is FSC-certified, contains 30% post-consumer recycled fiber, and is manufactured with electricity in the form of renewable energy. U2:XG is manufactured by Appleton Control www.appletoncontrol.com				



Printed on
environmentally
friendly paper
with soy inks.