

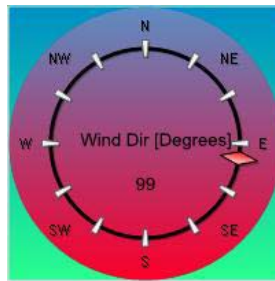
Appendix L

Wind Rose Display Options

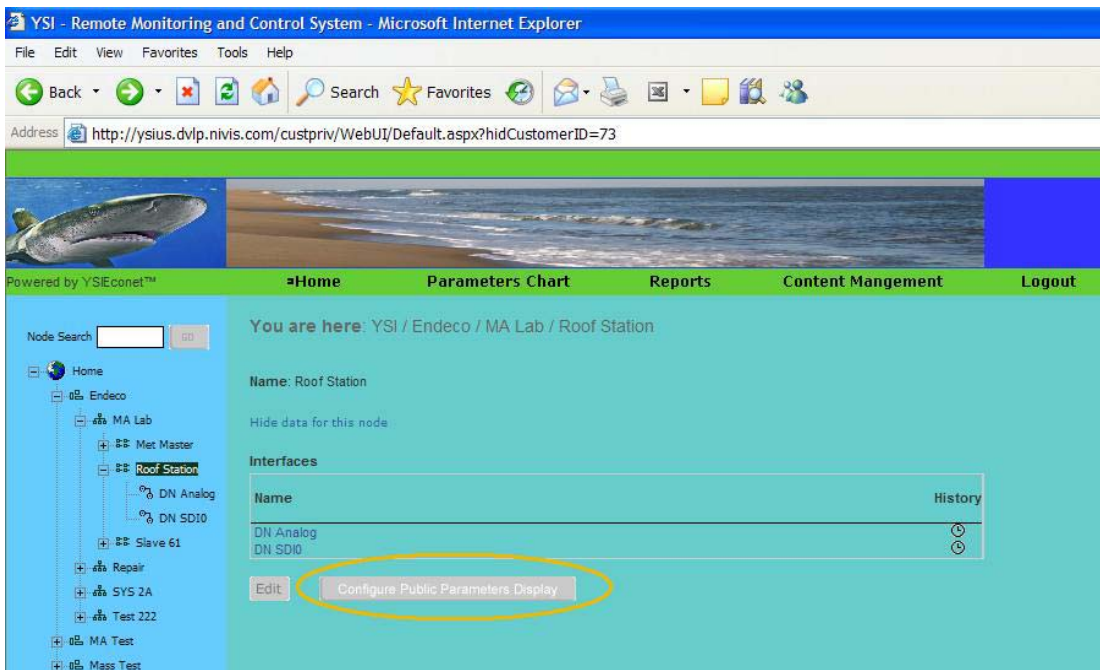
Wind Rose Data Display

REVISION 1.2 April 14, 2008

The EcoNet website allows users to change the display gauge for wind direction. The new icon is a wind rose icon that will display a digital value for the wind direction as well as an analog hand on a compass rose to show the direction the wind is blowing. An Example of the gauge icon is shown below. The steps needed to change the wind direction display gauge are given below. The user must have administrator privileges to implement this change.



Step 1) Log into the EcoNet private website and on the left hand site scroll down through the network tree to the node with the met station attached to it. Once the node is located click on the node name, the main screen will now show that nodes parameters. Click the “Configure Public Parameters Display” button located in the center of the screen.



Step 2) Select the desired wind parameter and under the Gauge type pull down menu select the wind rose style and then click the “submit” button. The changes can then be seen on the public website.

Powered by YSI EcoNet™

Home Parameters Chart Reports Content Mangement Logout

You are here: YSI / Endeco / MA Lab / Roof Station

Submit Back

Public	Parameter	Label	Gauge type	Parameter order
<input checked="" type="checkbox"/>	DN Analog\Battery [V]	Battery	Circular 90	DN Analog\Battery [V]
<input checked="" type="checkbox"/>	DN Analog\Solar Rad [KW/m^2]	Solar Rad	Circular 90	DN SDI0\Wind Dir [Degrees]
<input checked="" type="checkbox"/>	DN Digital\Rainfall [in]	Rainfall	Circular 90	DN Analog\Solar Rad [KW/m^2]
<input checked="" type="checkbox"/>	DN SDI0\Air Humidity [%]	Air Humid	Circular 90	DN Digital\Rainfall [in]
<input checked="" type="checkbox"/>	DN SDI0\Air Temp [F]	Air Temp	Thermometer	DN SDI0\USER09 [Unit]
<input checked="" type="checkbox"/>	DN SDI0\Pressure [count]	Pressure	Circular 360	DN SDI0\USER10 [Unit]
<input checked="" type="checkbox"/>	DN SDI0\USER09 [Unit]	USER09	Circular 90	DN SDI0\USER11 [Unit]
<input checked="" type="checkbox"/>	DN SDI0\USER10 [Unit]	USER10	Circular 90	DN SDI0\USER12 [Unit]
<input checked="" type="checkbox"/>	DN SDI0\USER11 [Unit]	USER11	Circular 90	DN SDI0\Air Temp [F]
<input checked="" type="checkbox"/>	DN SDI0\USER12 [Unit]	USER12	Circular 90	DN SDI0\Pressure [count]
<input checked="" type="checkbox"/>	DN SDI0\USER13 [Unit]	USER13	Circular 90	DN SDI0\Air Humidity [%]
<input checked="" type="checkbox"/>	DN SDI0\USER14 [Unit]	USER14	Circular 90	DN SDI0\USER13 [Unit]
<input checked="" type="checkbox"/>	DN SDI0\USER15 [Unit]	USER15	Circular 90	DN SDI0\USER14 [Unit]
<input checked="" type="checkbox"/>	DN SDI0\Wind Dir [Degrees]	Wind Dir	WindRose	DN SDI0\USER15 [Unit]
<input checked="" type="checkbox"/>	DN SDI0\Wind Direction []	Wind Dire	WindRose	DN SDI0\Wind Direction []
<input type="checkbox"/>	DN SDI0\Wind Direction []	Wind Dire	WindRose	DN SDI0\Wind Speed [m/s]
<input checked="" type="checkbox"/>	DN SDI0\Wind Speed []	Wind Spe	Circular 90	DN SDI0\Wind Speed []
<input type="checkbox"/>	DN SDI0\Wind Speed []	Wind Spe	Circular 360	DN SDI0\Wind Speed [m/s]
<input type="checkbox"/>	DN SDI0\Wind Speed []	Wind Spe	Horizontal	
<input type="checkbox"/>	DN SDI0\Wind Speed []	Wind Spe	Vertical	
<input checked="" type="checkbox"/>	DN SDI0\Wind Speed [m/s]	Wind Spe	Thermometer	
			WindRose	

Submit Back