

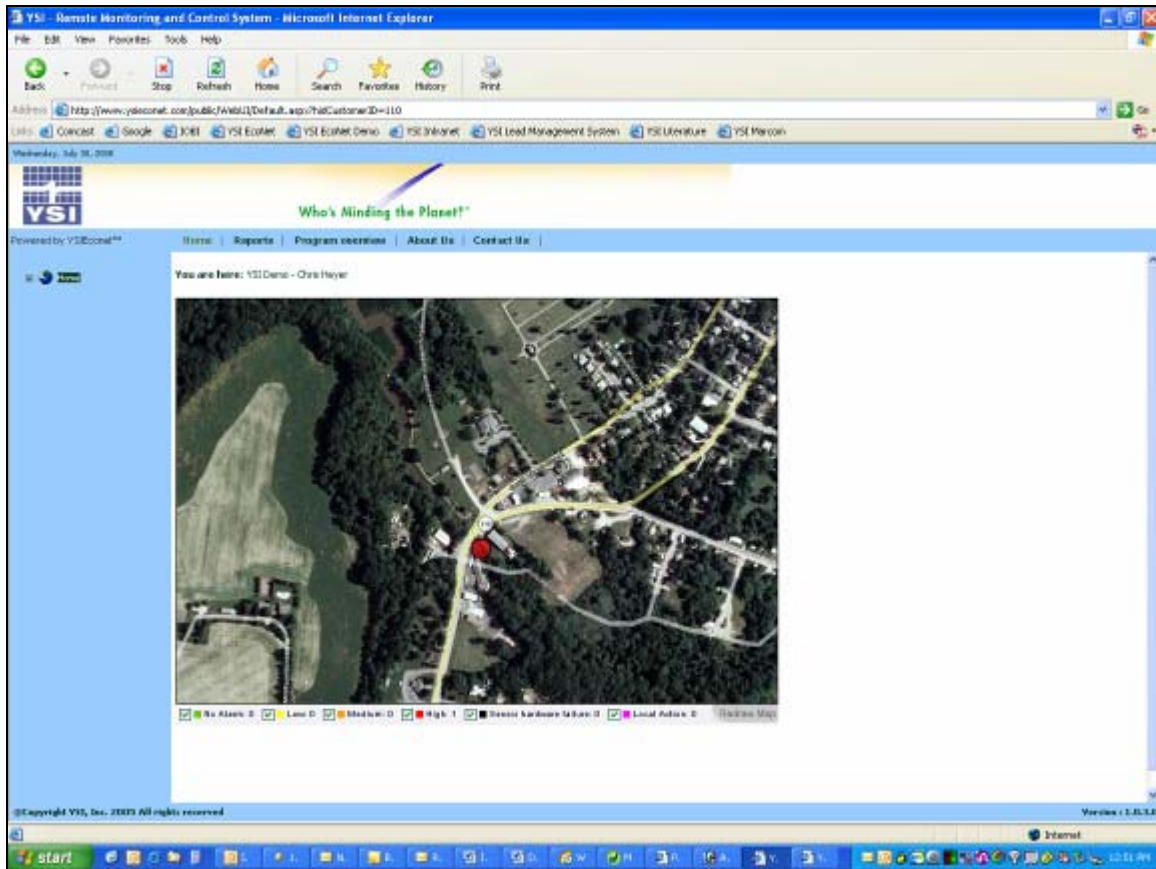
Appendix M

Embedding EcoNet Data in Your Website

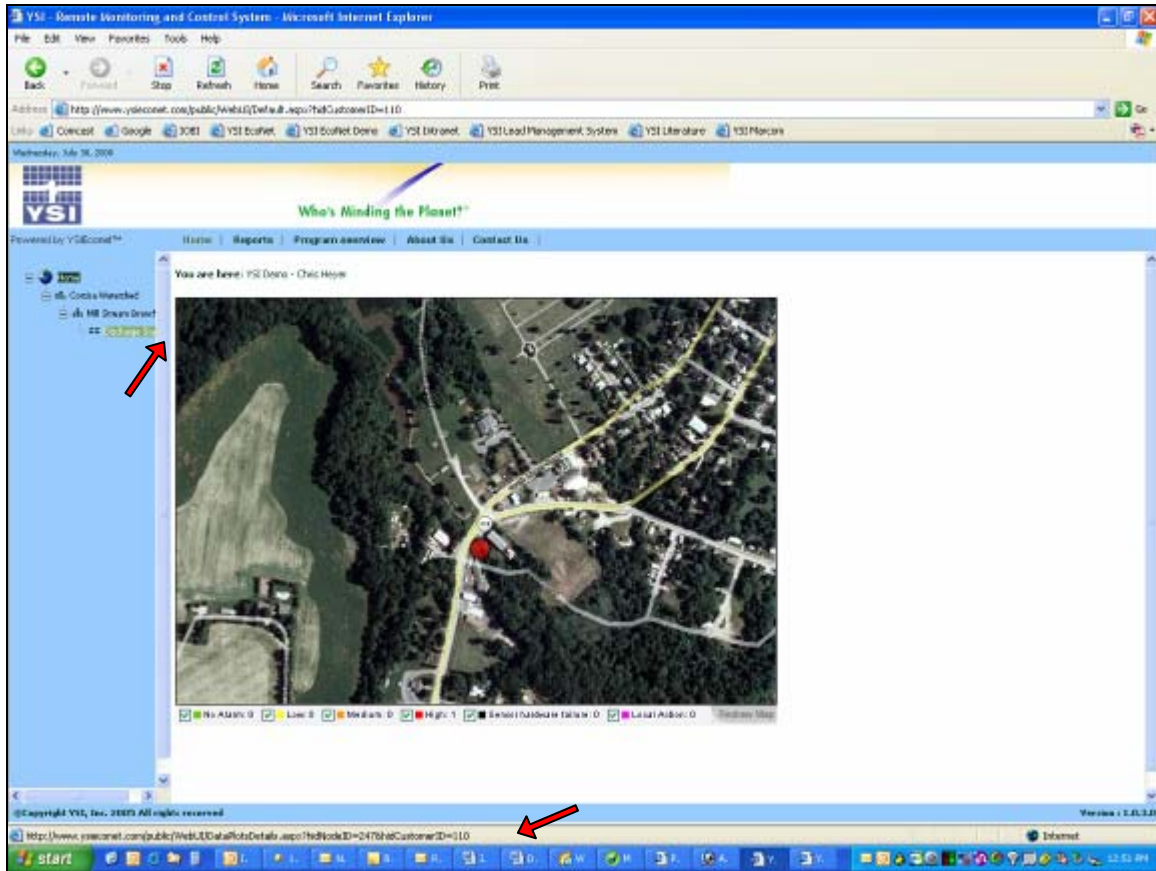
Embedded EcoNet Live Data into an Existing Website

Through the use of HTML code, users can easily embed their live EcoNet data into an existing website. This feature is useful if you have an existing website that you want to add the reliability of EcoNet real-time data to. By using this tool, you are able to maintain the look and feel of your existing website, while still adding all of the public data display features of the data display.

Step 1) Go to your public EcoNet Website.



Step 2) Expand the navigation tree to the lowest level. Hover over the lowest level to display the URL of the data in the status bar at the bottom of the screen. Note the “NodeID” and the “CustomerID” numbers.



Step 3) In a new web browser window, enter this URL. Change the Node ID number and the Customer ID number to the ones you identified in step 2 above.

If You Are Using Data Graphs:

<http://www.ysieconet.com/public/WebUI/DataPlotsDetails.aspx?hidNodeID=247&hidCustomerID=110>

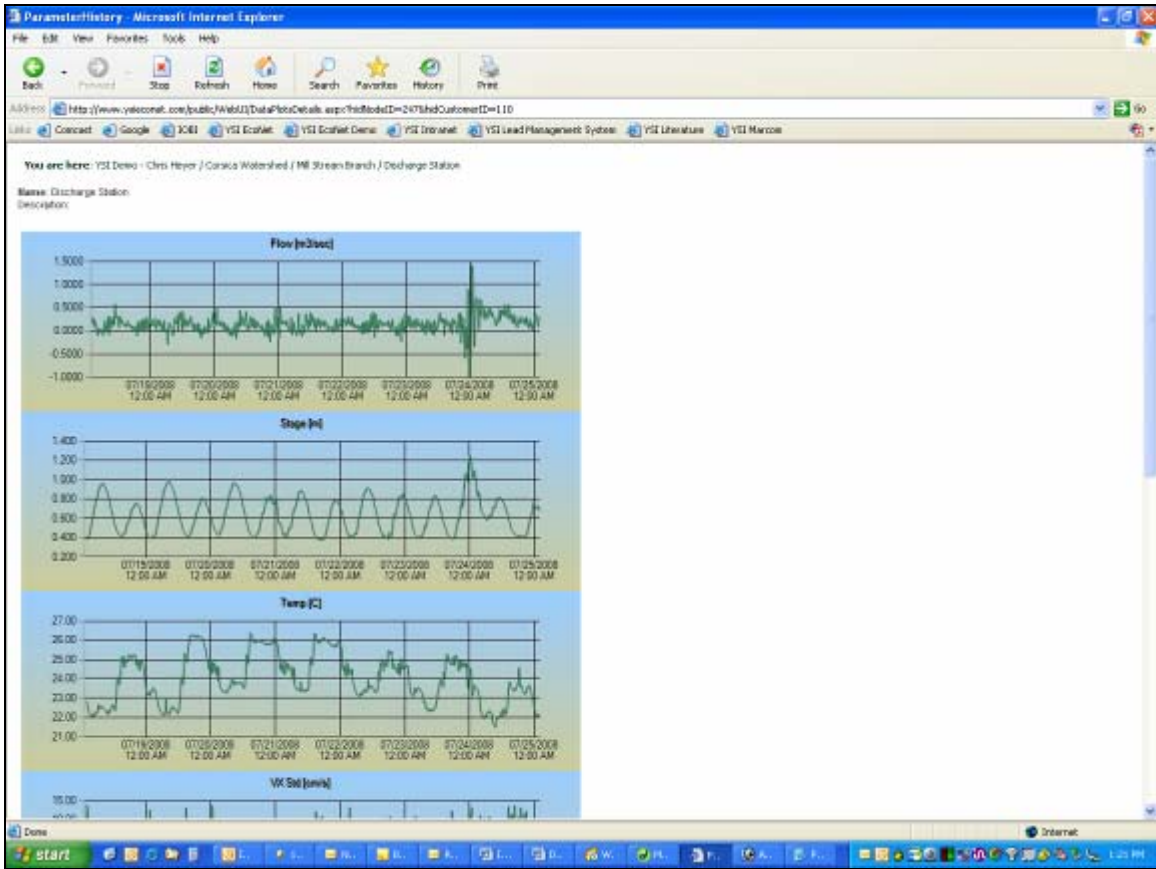
If You Are Using Gauges:

<http://www.ysieconet.com/public/WebUI/DashboardDetails.aspx?hidNodeID=247&hidCustomerID=110>

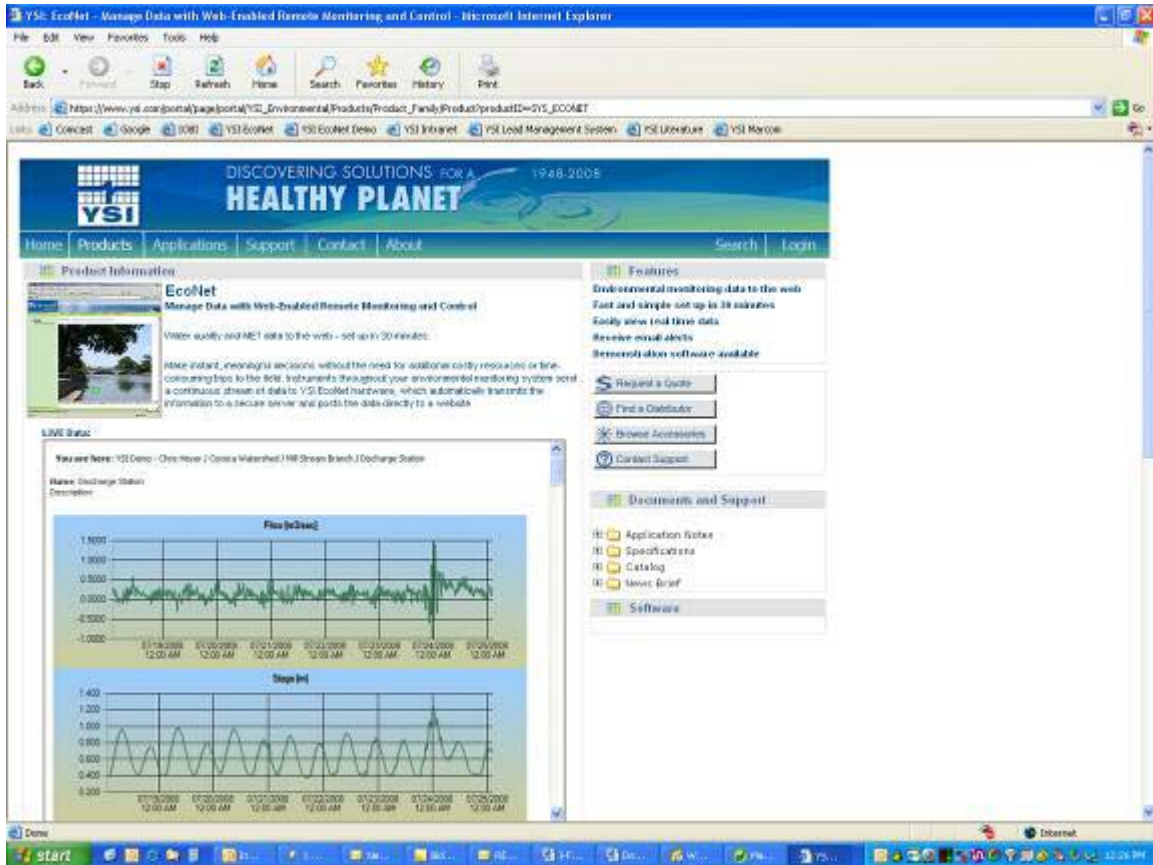
If You Are Using Data Tables:

<http://www.ysieconet.com/public/WebUI/NodeUnitDetails.aspx?hidNodeID=247&hidCustomerID=110>

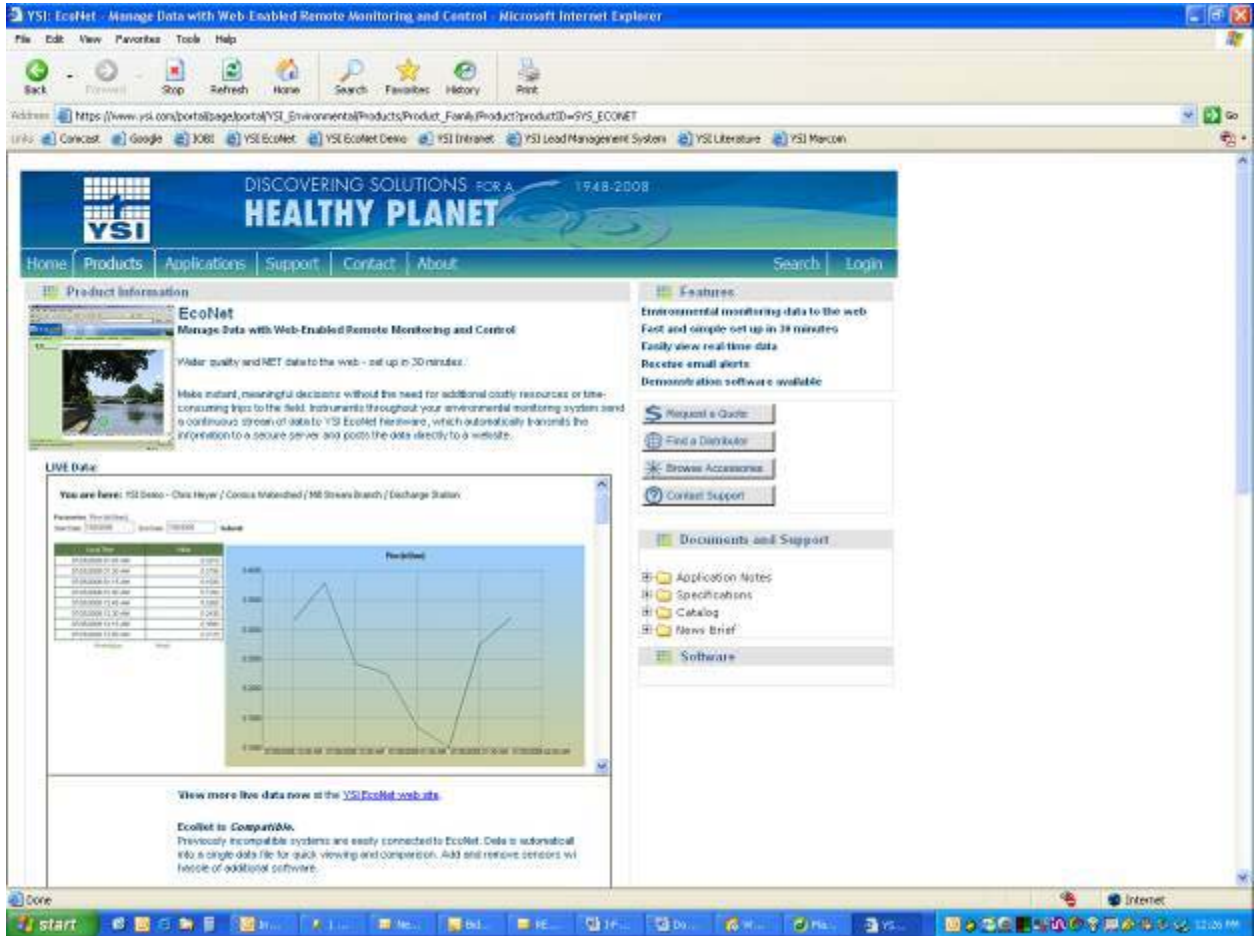
Step 4) Confirm that the data you are looking at are your data. Once confirmed, leave this window open so you can copy and paste the URL into your website.



Step 6) Verify that the end result is a frame within your website with the live data in it:



Note that the functionality of clicking on any single parameter to get a time-series graph of that parameter along with the data values still works within the iframe:



Some of YSI’s customers who are currently using this tool with their existing websites include:

The DC Department of the Environment:
<http://www.ddoe.dc.gov/ddoe/cwp/view.a.1209.q.497570.asp>

The Virginia Institute of Marine Sciences (VIMS):
<http://www2.vims.edu/vecos/RealtimeViewer.aspx?param=MON000.18>

The Virginia Commonwealth University:
<http://www.vcu.edu/rice/research/waterquality.html>