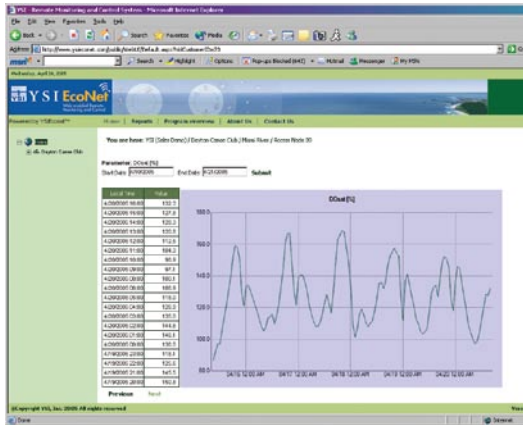




## EcoNet® Web-Enabled Datalogger

*Delivers data directly via web, email, or FTP*



EcoNet is simple to operate, requires the least amount of maintenance of any real-time monitoring system, and makes collaboration easy. Because EcoNet can operate *without* a base-station computer, data is delivered from the field directly to a secure database web server. This allows limitless scalability—as many as 100 sites can transmit data simultaneously!

Set up is as simple as connecting the battery, antenna, and field cable. EcoNet does the rest—automatically detects the sensors, sets the units and sampling routine, and delivers data. You *do not* have to program code, interpret cryptic data files, join data sets to plot data, nor update software. Plus, you *do not* have to pay for desktop software licenses; only internet access is needed.

You can make changes through a web site from anywhere in the world. You can also rely on YSI's unrivaled technical team should you need advanced support.



### Collaboration

- Web-based monitoring network is ideal for securely sharing data with strategic partners and co-operators.
- Dedicated public website can display provisional real-time data directly to the public, without the need for local IT resources

### Integration

- YSI monitoring instrumentation works seamlessly with EcoNet
- Does *not* require a base station to relay the data
- Does *not* require a PC in the field to retrieve data and configure system
- EcoNet web sites can be customized with your logo, colors, and images

### Information

- Turn data into information by visualizing sites on maps, plots, and gauges
- Tailor reports with information that users are specifically interested in
- Program alarms for visual display and email notifications
- Set up automatic emails for daily data reports

### Services

YSI employs a team of field contractors and engineers who can help survey a site, select the best monitoring locations, install site infrastructure, and coordinate the start-up of your monitoring network. From a single site to hundreds, YSI has tools to get you running with a minimal amount of resources.

*For applications not requiring data to the web, YSI EcoLink provides a easy to use interface with data delivery to a desktop computer.*



[www.ysi.com/econet](http://www.ysi.com/econet)  
[www.ysieconet.com](http://www.ysieconet.com)



To order, or for more information, contact YSI Integrated Systems & Services

+1 508 748 0366  
800 363 3269 (US)  
systems@ysi.com  
www.ysi.com

YSI Environmental  
Yellow Springs, OH  
+1 937 767 7241  
environmental@ysi.com

SonTek/YSI  
+1 858 546 8327  
inquiry@sontek.com

YSI Gulf Coast  
+1 225 753 2650  
gulfc coast@ysi.com

YSI Hydrodata  
European Support Centre  
+44 1462 673 581  
europe@ysi.com

YSI Middle East (Bahrain)  
+973 39771055  
halsalem@ysi.com

YSI India  
+91 9891220639  
sham@ysi.com

YSI (China) Limited  
+86 10 5203 9675  
beijing@ysi-china.com

YSI Nanotech (Japan)  
+81 44 222 0009  
nanotech@ysi.com

YSI (Hong Kong) Limited  
+852 2891 8154  
hongkong@ysi.com

YSI Australia  
+61 7 39017223  
acorbett@ysi.com

ISO 9001  
ISO 14001

(Yellow Springs facility)

YSI EcoNet and Who's Minding the Planet? are registered trademarks of YSI Incorporated.

©2009 YSI Incorporated  
Printed in USA 0509 E13-03



YSI incorporated  
Who's Minding  
the Planet?

## EcoNet Features

**Data Management Services:**  
Hardened internet data center  
Firewall and virus protection  
Redundant power and connectivity

**Data Display/Access:**  
Public web site access with URL  
View data (tabular or graphical)  
View historical data  
Private secure access with password  
Data display and analysis  
Download data files (current/historical)

**Site/Sensor Configuration:**  
User-selectable sensor/site sample interval  
User-selectable transmission interval  
(from a configuration web site)

**Data Reports:**  
Fixed time reports (daily, weekly, monthly)  
User-defined reports

**Alarm and Alert Set-up:**  
Create/edit local actions (control)  
Create/edit alarm settings and thresholds  
Initiate notification on alarm  
Event triggers (alarm outputs, sampling rate, transmission rate)

**Web Site Content Management:**  
Create and manage content  
Configure data display  
Add/edit map images and graphics  
Create and manage users and roles

**Data Sharing and Transfer:**  
FTP data transfer (weekly)  
Data reports

## YSI 6305-xx EcoNet Datalogger Specifications

<b>Power</b>		Main input voltage: 7.5 - 16 V DC Rechargeable gel-cell battery, or lead acid (minimum recommended: 12 V, 18 Ah) Typical current consumption: Normal operation: 55-70 mA Sleep mode: 12-15 mA
<b>Memory</b>		16 MB Flash, 32 MB SDRAM
<b>Size</b>	<b>Length</b> <b>Width</b> <b>Height</b>	8.75 in. (22.2 cm) 5.25 in. (13.3 cm) includes connectors 5.0 in. (12.7 cm)
<b>LCD/Keypad (6305 only)</b>		Alphanumeric LCD, 4 lines x 20 characters Numeric 4 x 4 keypad (0-9, *, #, A-D)
<b>Ethernet</b>		10 MB on-chip ethernet controller 10BASE-T port with analog filters
<b>Input/Output</b>	<b>Analog</b>	8 configurable 12 bit analog inputs Input voltage: 0 - 2.4 V Configurable as: Single-ended (7 available channels + 1 internal battery monitor) Differential (3 differential pairs) 4-20 mA loop (7 available channels) Programmable gain: 0.5, 1, 2, 4, 8
	<b>Digital</b>	8 user-configurable digital I/O (24 channels optional) Configurable as: Input (5 V tolerant) Output (max 3 mA) Pulse input (accumulation available) Digital port output high voltage: 0.8 to 3.1 V Digital port output low voltage: 0.3 to 0.5 V Digital port I/O capacitance: 8 pF
<b>Comm Ports</b>		1 RS-232 diagnostic port 1 SDI-12 serial port, supports up to 10 SDI-12 sensor devices at 1200 bps data rate