



a xylem brand

Professional Plus Software Update Instructions

These instructions describe how to update the Professional Plus instrument software.

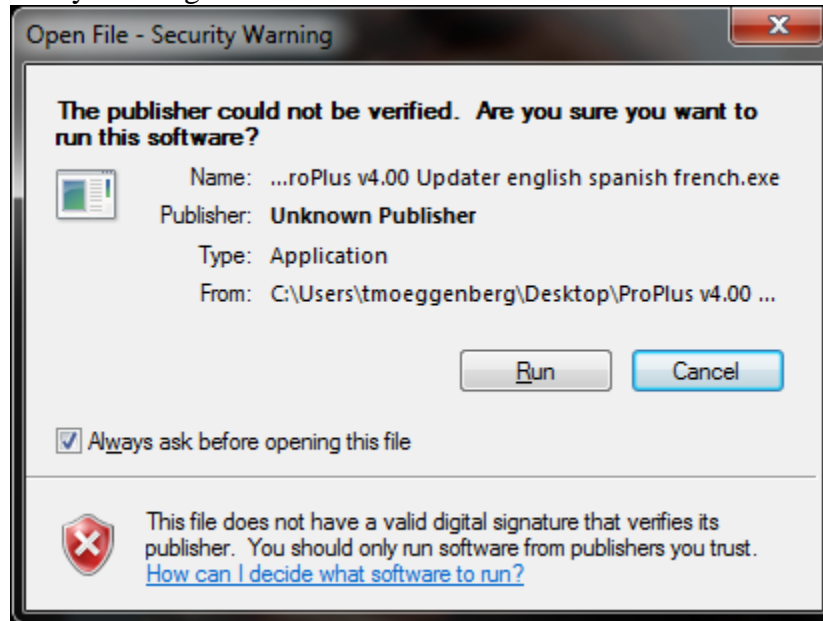
Minimum PC system requirements are:

- Windows® 2000 with SP4 (minimum), XP with SP2 (minimum), Windows® 7 with SP1 (minimum) 32-bit or 64-bit Operating System
- USB 2.0
- Microsoft .NET™ (installed with Data Manager)
- YSI USB drivers for the Professional Series Communications Saddle (installed with Data Manager)

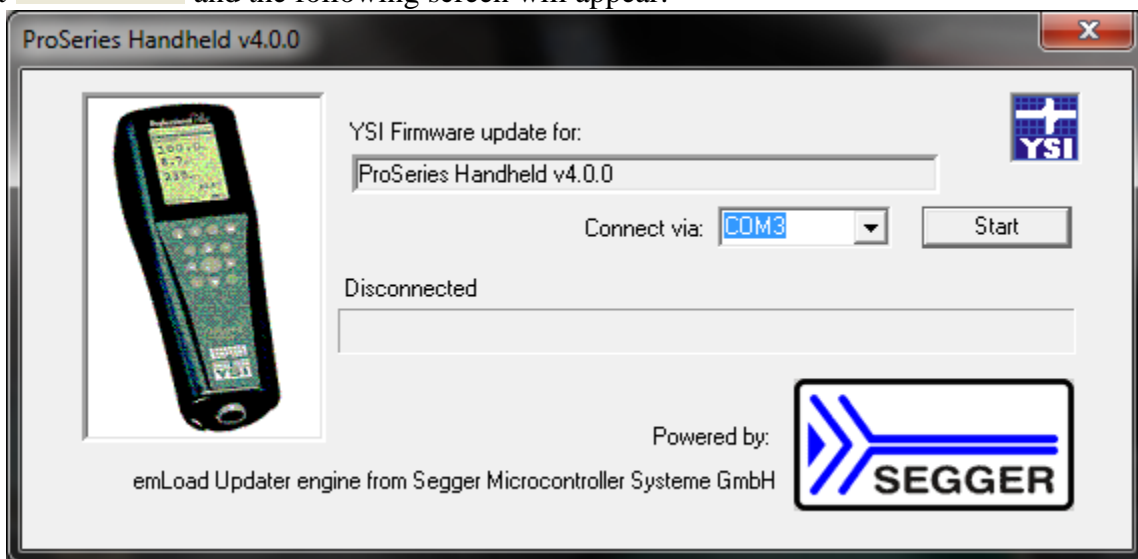
Complete the following steps to update a Professional Plus instrument to the latest software version:


1. If not already installed, install the USB drivers for the Pro Comm II communications saddle and Data Manager on your PC via the CD included with your instrument or from www.ysi.com. After installation, connect the communication saddle to the PC's USB port with the USB cable provided. Windows may require you to step through two 'New Hardware Found' wizards in order to complete the USB driver installation.
2. From www.ysi.com, save the ProPlus Software Updater file to your PC. You will need to log into the website or create login credentials to proceed with the download. (Click login or Register) There are six different files available, each with a different language combination. It is only necessary to download the file you need. The language combination options include:
 - English, Spanish, and French
 - English, French, and German
 - English and Italian
 - English, Japanese, and Chinese
 - English and Norwegian
 - English, Spanish, and Portuguese
 - English, Polish, and Turkish
3. Once the file is downloaded, extract the file from the zip file to a directory on your PC.
4. Attach the ProComm II saddle to the PC's USB port with the USB cable provided. Next, connect the saddle to the Pro Plus instrument and then turn the instrument off.

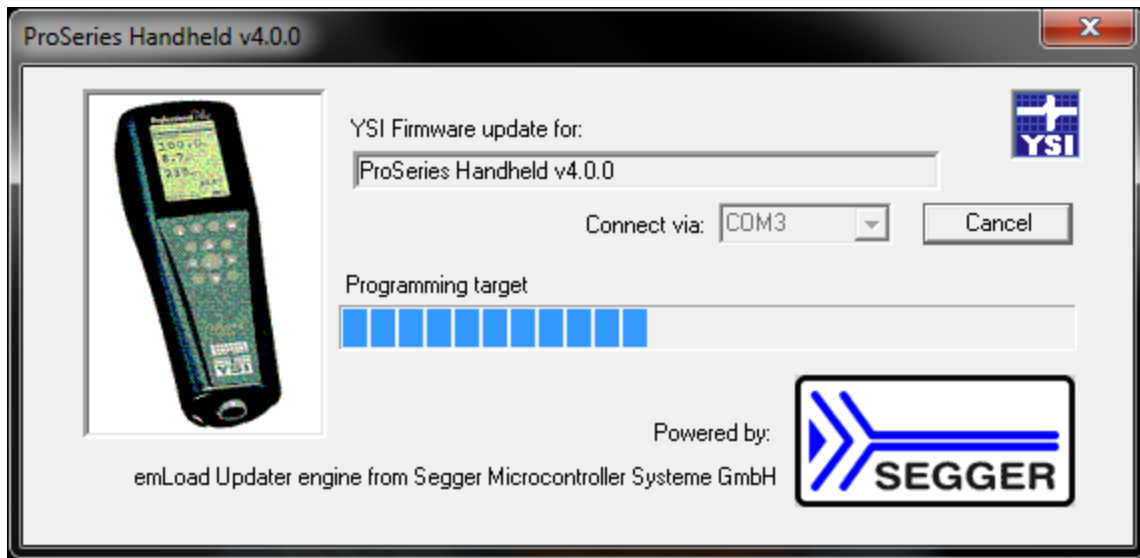
5. Run the Pro Plus Updater from the unzipped directory folder. Depending on your version of Windows, you may get a security warning screen as shown below.



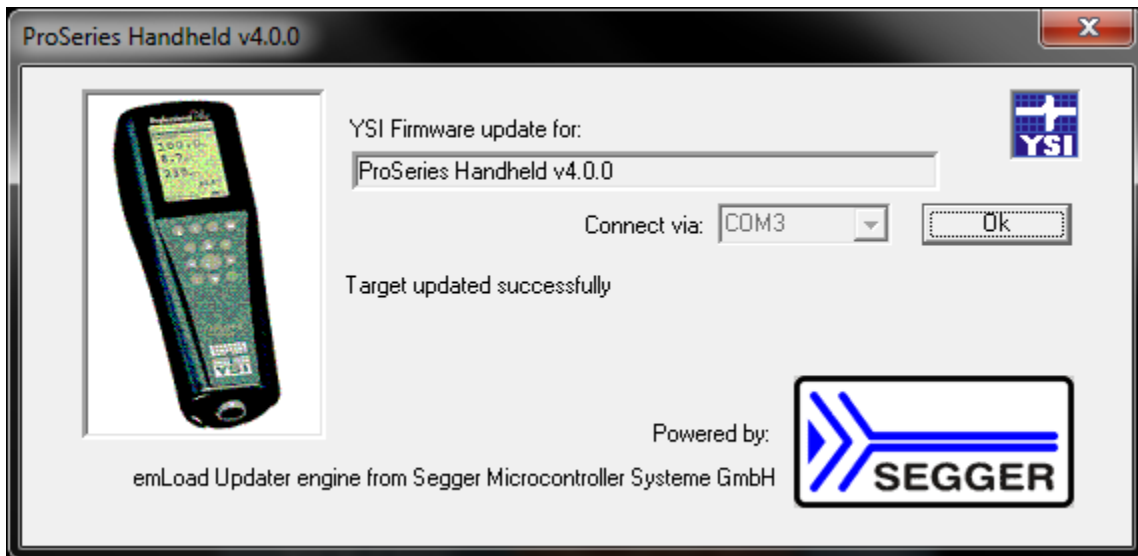
6. Select  and the following screen will appear:




7. In the Updater program, select the Com Port assigned to the Professional Series saddle from the drop down menu labeled “Connect via”. If necessary, the Com Port assignment can be determined or reassigned from the PC’s Device Manager. PLEASE NOTE: THE COM PORT MUST BE COM 8 OR LOWER FOR THE UPDATER PROGRAM TO FUNCTION.
8. Press the Updater program’s  button.
9. Turn the instrument on.
10. The Updater Program will begin the update process and a progress bar along the bottom of the window will display the progress of the file transfer:



11. The update process will take approximately 5 minutes. When the update is complete, the application will display “Target updated successfully”. You may exit the Updater program and disconnect the instrument from the saddle.



12. The current software version can be verified by pressing the System  key on the Pro Plus instrument and looking at the Sw Version displayed in the System menu.

