

THE EXO FILES

Paul Nieberding

About Us



- Founded in 1999 by Steve and Liz Fondriest
- Located in Fairborn, Ohio
- Great Lakes manufacturer's rep for EXO, SonTek, Aanderaa
- Nationwide distributor for YSI, Global Water, and ~30 other brands
- Sister company NexSens Technology

FONDRIEST
ENVIRONMENTAL, INC.

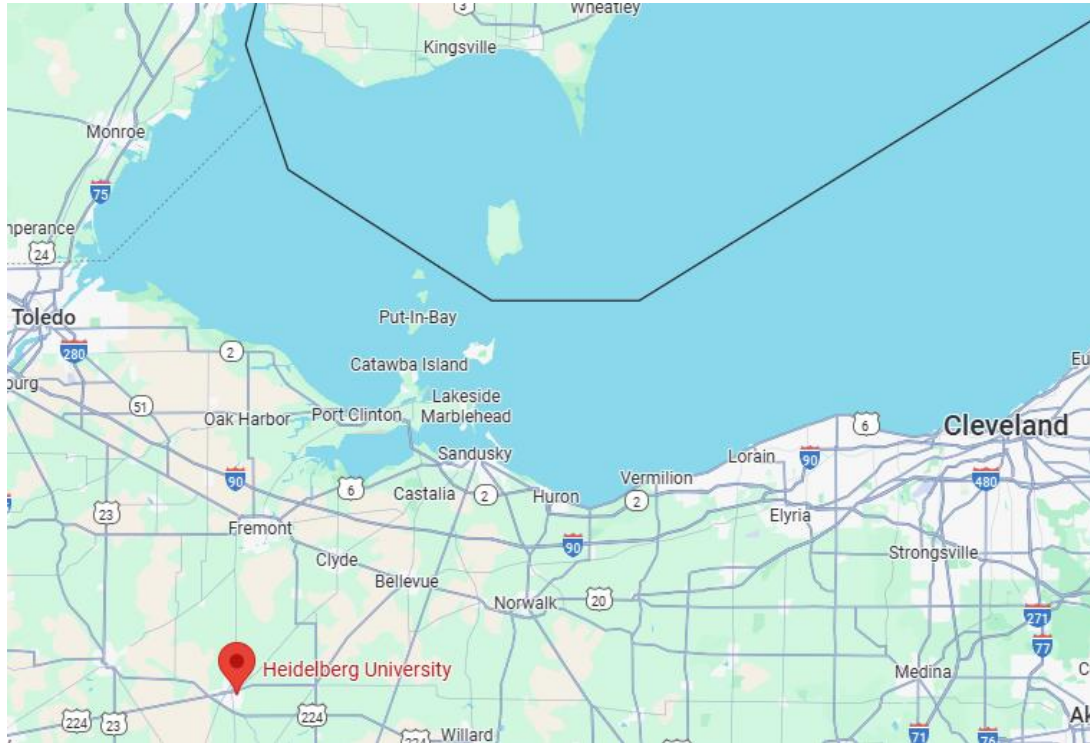
when your
research
demands
quality data



Case Studies

Heidelberg University

Northeast Ohio



National Center for Water Quality Research

- Research focused on quantifying nutrients entering Ohio's streams & rivers
- Manages 23 sites connected to Great Lakes

Northeast Ohio

Indoor Station

- ISCO Autosampler
- YSI EXO3 Sonde
- TriOS NICO UV Nitrate Sensor
- NexSens X2 Cellular Data Logger



Heidelberg University

Northeast Ohio

Outdoor Station

- YSI EX03 Sonde
- NexSens X2 Data Logger



Heidelberg University

Northeast Ohio



Type and hit enter...



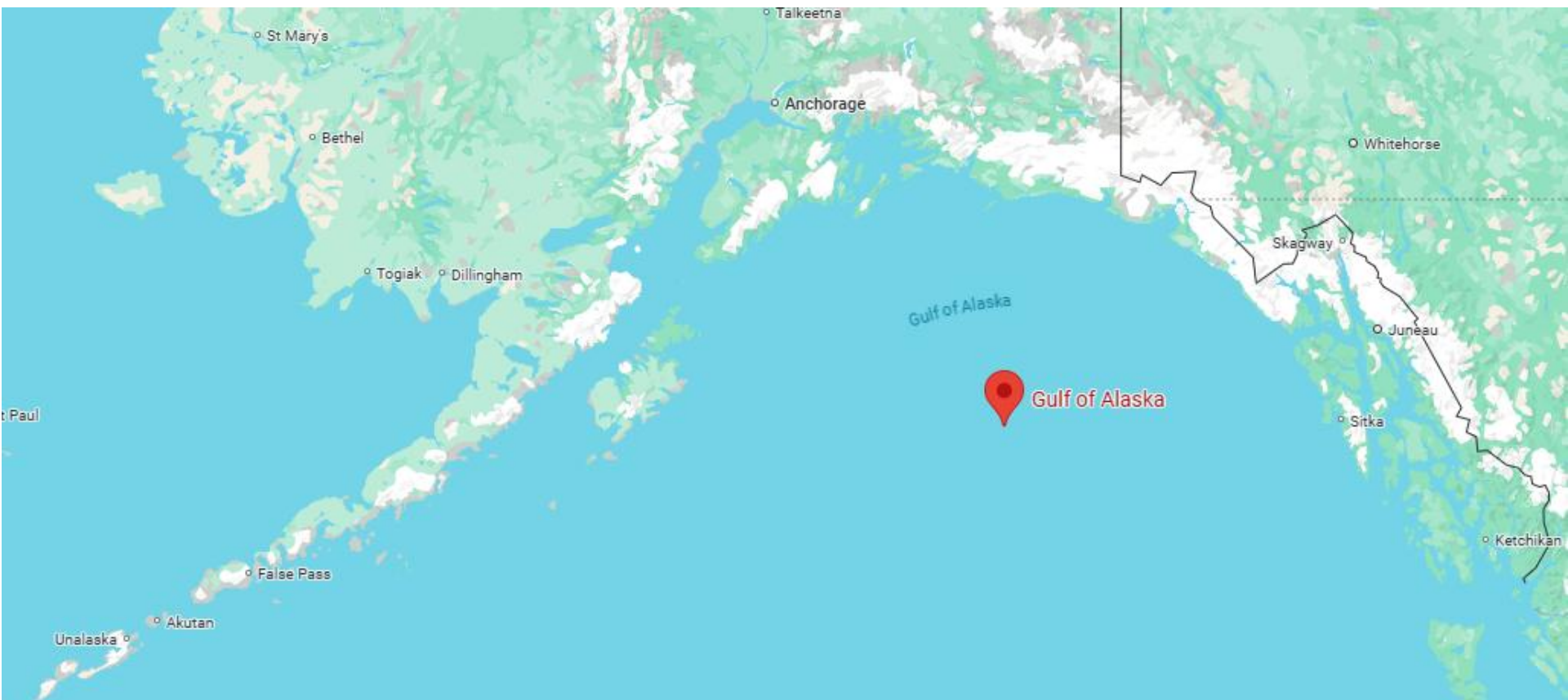
[Datacenter Link](#)

FONDRIEST
ENVIRONMENTAL, INC.

when your
research
demands
quality data

MarRecon

Mariculture Research and Restoration Consortium – Gulf of Alaska



FONDRIEST
ENVIRONMENTAL, INC.

when your
research
demands
quality data

MarRecon

Mariculture Research and Restoration Consortium – Gulf of Alaska



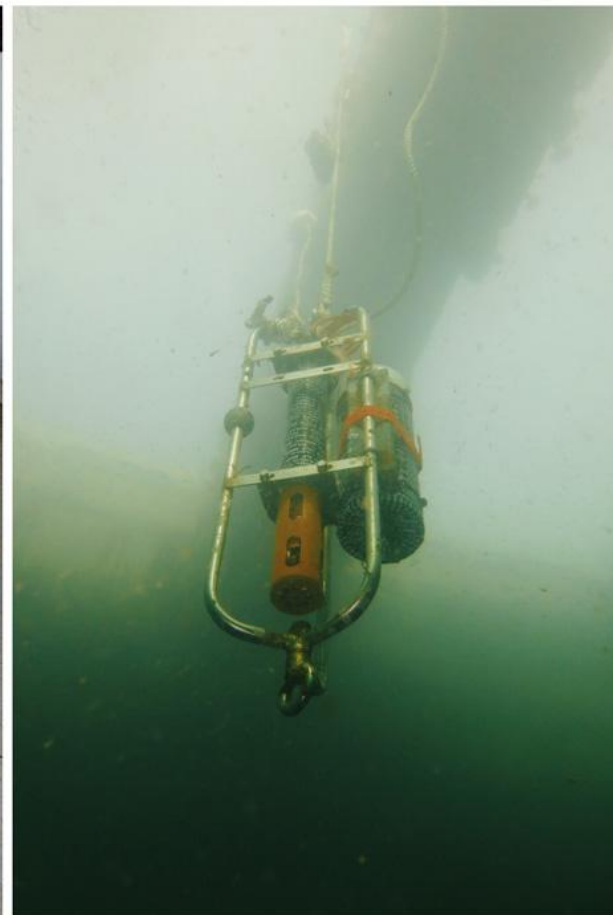
- Studies developing mariculture industry
 - Kelp
 - Oysters
- Focused on areas impacted by *Exxon Valdez* oil spill (1989)

MarRecon

Mariculture Research and Restoration Consortium – Gulf of Alaska

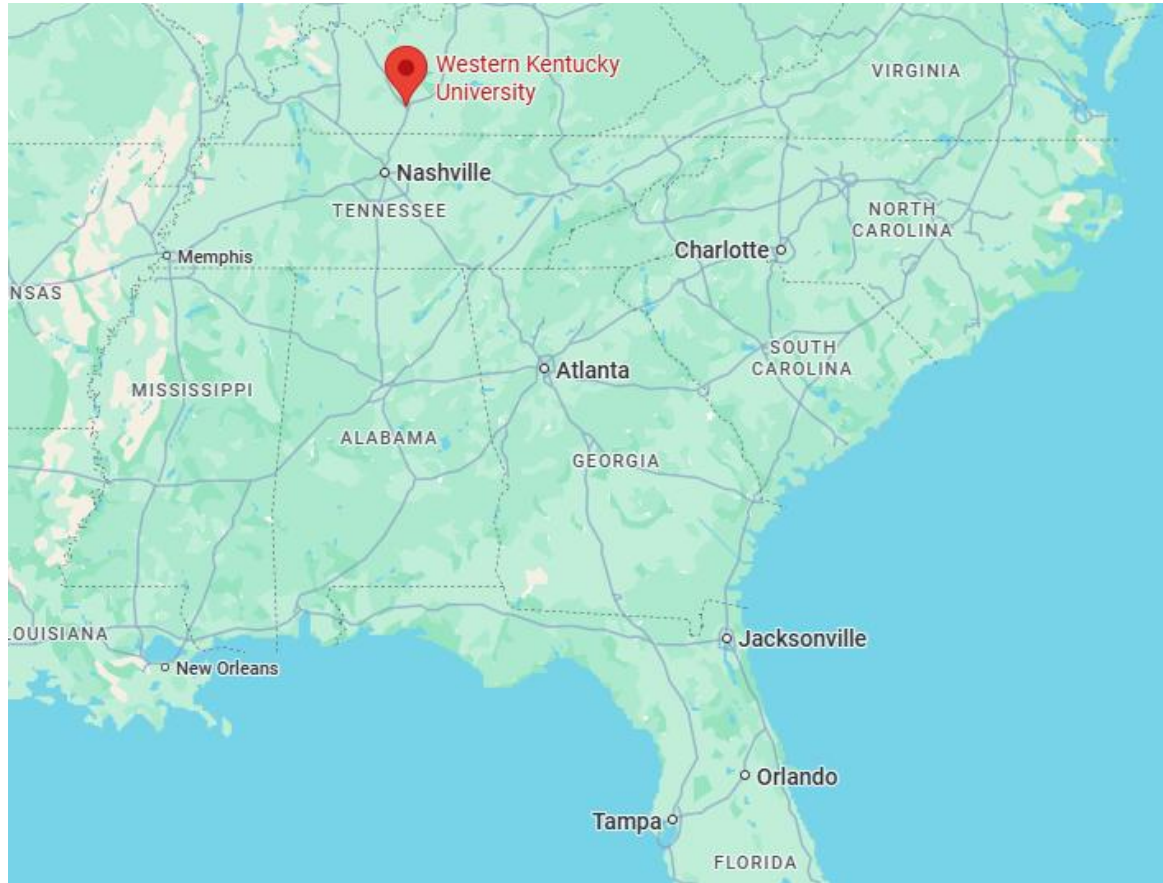
Deployed year-round
at 3-4m depths

- YSI EX02 or EX03 Sonde
- NexSens CAGE-EXO Instrument Cage
- NexSens SBP500 Submersible Battery Pack



Western Kentucky University - CHNGES

Center for Human GeoEnvironmental Studies



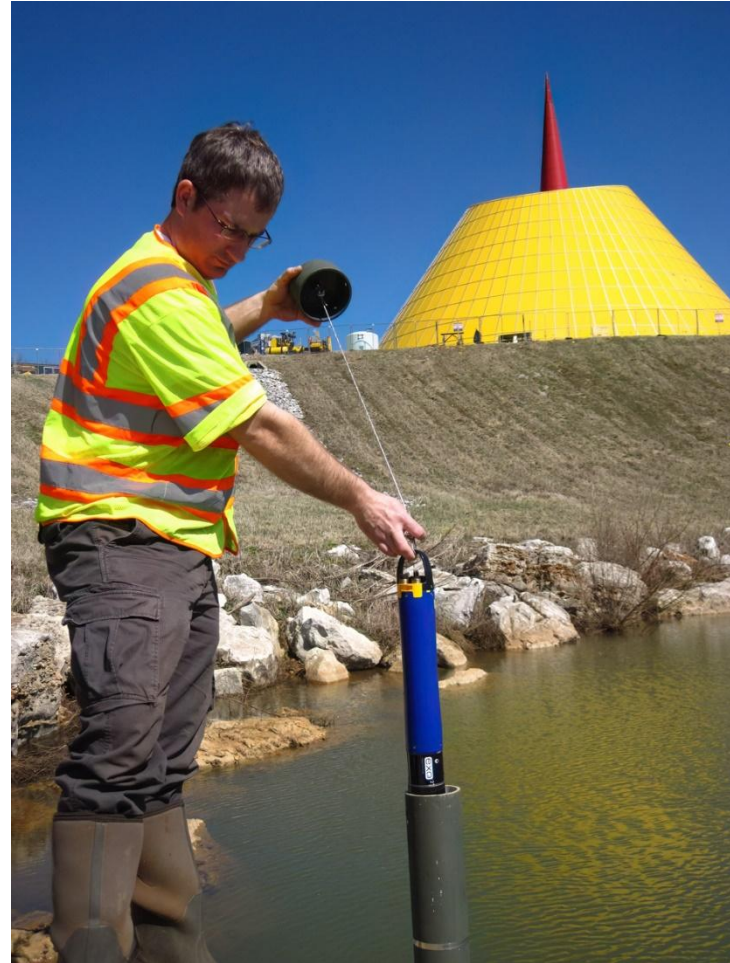
- Collaboration with City of Bowling Green, Kentucky
- Manages 10 EXO2 sondes, 8 real-time stations (including 1 data buoy)
- Project has been ongoing for 10+ years
- Focus on karst environments
 - Caves
 - Sinkholes
 - Springs
 - Underground rivers

Western Kentucky University - CHNGES

Center for Human GeoEnvironmental Studies

National Corvette Museum

- 2014 sinkhole
 - 40 ft. wide
 - 60 ft. long
 - 30 ft. deep



Western Kentucky University - CHNGES

Center for Human GeoEnvironmental Studies



FONDRIEST
ENVIRONMENTAL, INC.

when your
research
demands
quality data

Western Kentucky University - CHNGES

Center for Human GeoEnvironmental Studies



Custom Data Buoy

- Shallow river deployment

Kentucky Dept of Env Protection

Emergency Response Branch



- Responds to chemical and oil spills
- Needed small, easily deployable buoy systems
- Elevated by large crude oil spill in Kentucky River

Kentucky Dept of Env Protection

Emergency Response Branch

- YSI EX03s Sonde
- Turner Designs C3 Fluorometer
- Garmin 19x GNSS Receiver
- NexSens X2-SDL Cellular Data Logger
- NexSens CB-50 Data Buoy



Kentucky Dept of Env Protection

Emergency Response Branch

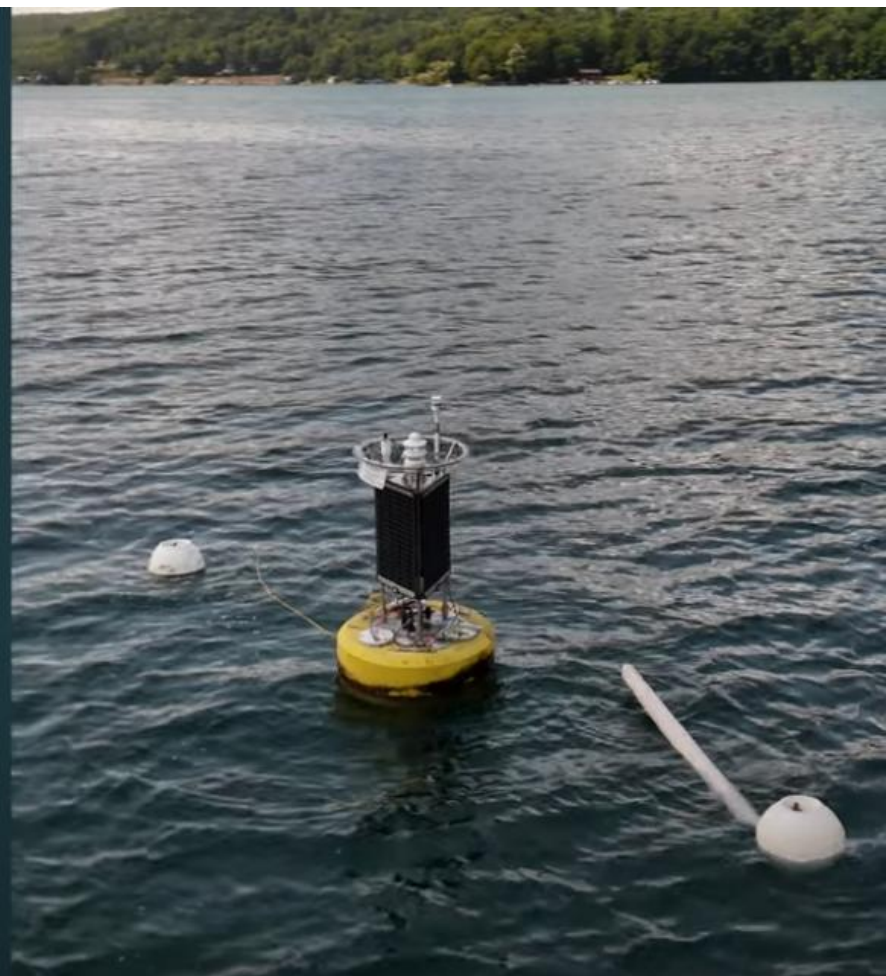
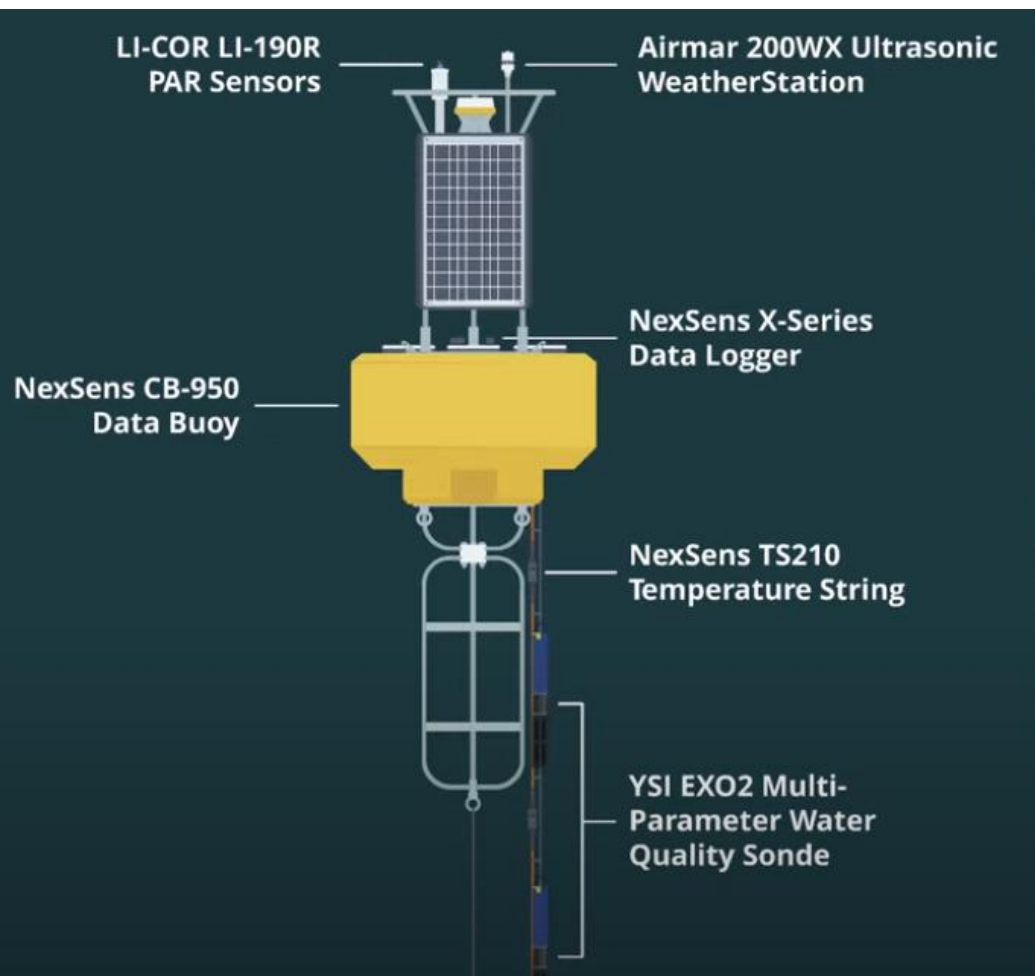


FONDRIEST
ENVIRONMENTAL, INC.

when your
research
demands
quality data

SUNY-Otsego

State University of New York – Otsego Lake



THE EXO FILES

Questions?