



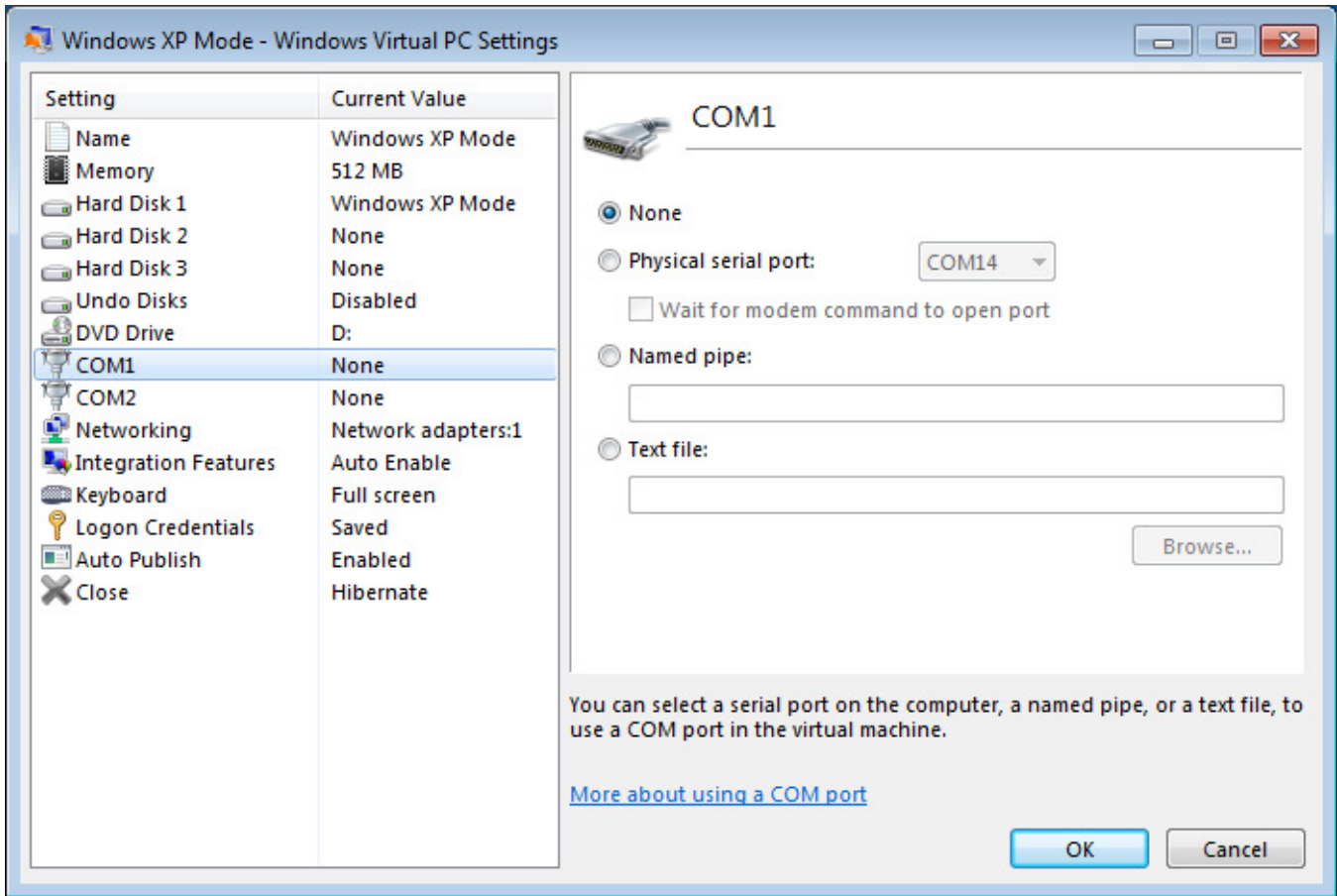
Windows 7 compatibility with EcoWatch

While Windows 7 technically is not a supported operating system for the EcoWatch software we have found that there are ways to make it work if you have a customer that is running Windows 7. There are many different versions of Windows 7 available. The main issue is whether you have a 32-bit or a 64-bit version of the Windows 7 operating system. We have done quite a bit of testing on different PC's and found that EcoWatch will install and run normally on all of the 32-bit Windows 7 machines that we have tried so far. If you have a 64-bit version of Windows 7 however EcoWatch WILL NOT install. You will get an error message stating that this software is not compatible with the operating system

There is a work around for some of the 64-bit versions of Windows 7 that will allow the users to install EcoWatch. This would be to install the Windows XP virtual PC from Microsoft. This is different from the standard Windows XP compatibility mode that is standard on all Windows 7 machines. This Virtual PC basically gives the user the ability to run a 32 bit version of Windows XP from within Windows 7 regardless of whether they have a 32 bit or 64 bit version of Windows 7. XP Mode/Virtual PC is free to download and install on Windows 7 **Professional, Enterprise and Ultimate**, only. This mode is not available to any of the lesser versions of Win 7 at this time. To download the Windows XP virtual PC please follow the link below. This is a 3 download process. All of the downloads and full instructions for the installation can be found in the following link.

<http://www.microsoft.com/windows/virtual-pc/>

Once the Windows XP virtual PC has been installed the user can then run the Virtual PC. Once Windows XP has started up you can then install EcoWatch from within the virtual PC just as you would on a normal Windows XP PC. If your PC has a serial port installed you will need to tell the Windows XP virtual PC where the com port is. To do this, click on "Tools" at the top of the screen and then choose "Settings". You will then see the screen below. From this screen click on "COM1" and over to the right click the option for "Physical serial port" and choose the COM port number that your serial port normally has in Windows 7. When you use EcoWatch you will select COM1.



If you will be connecting through a USB to serial adapter you will need to connect the adapter to the PC and allow Windows XP to install any drivers that are needed. Once the drivers are installed click on USB at the top of screen and click “Attach” for you adapter. This will make the USB adapter active. To find out what COM port has been assigned to your USB adapter you will need to go to the Windows XP device manager. There are many ways to get there. One of the easiest is to right click on “My Computer” and choose “Properties”. Click on the “Hardware” tab and click on “Device Manager”. From this screen scroll down and expand the “Ports” section. From here you should see your adapter listed with a COM number next to it. This COM port number will be the COM port that you use in EcoWatch. Once you have your COM ports set up and know the COM port number you can open EcoWatch and do everything as normal.

