



a xylem brand

ProODO™ Probe Software Update Instructions

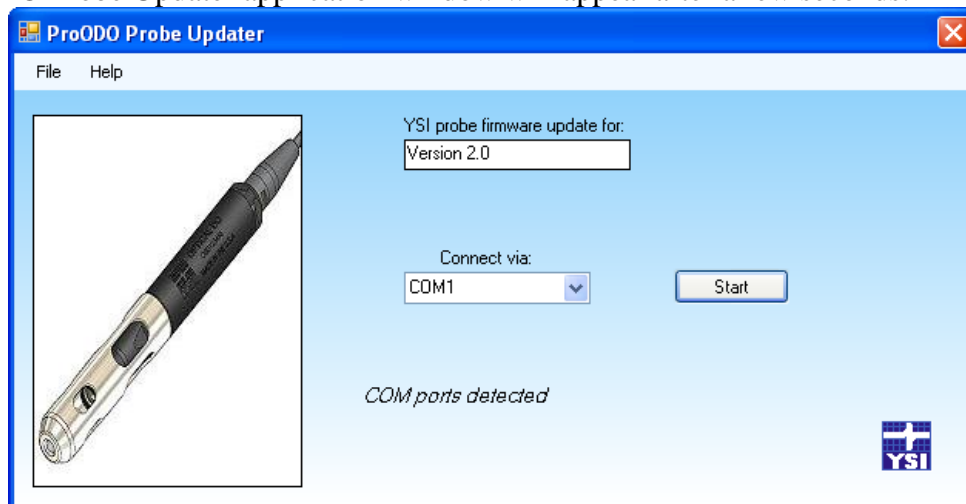
These instructions describe how to update the ProODO probe software.

Minimum PC system requirements are:

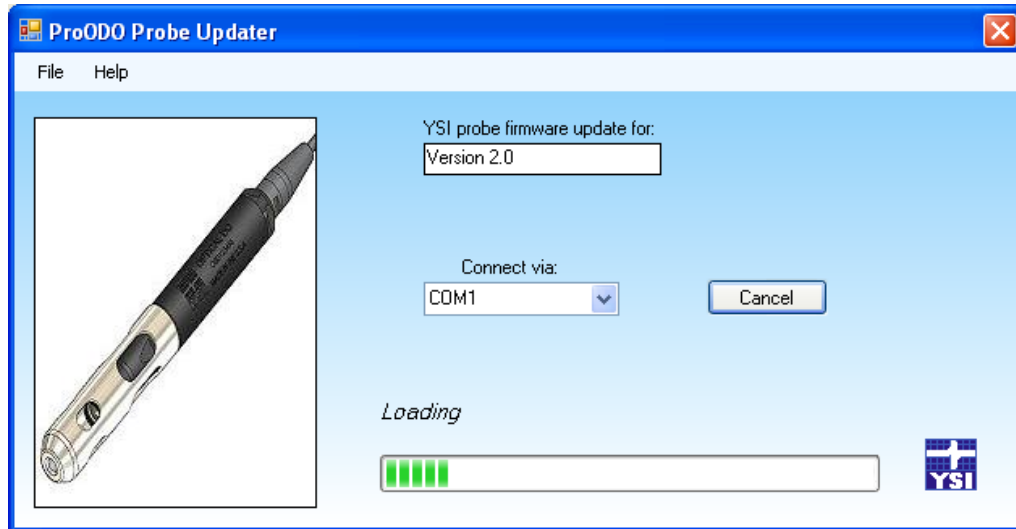
- Windows® 2000 with SP4 (minimum), XP with SP2 (minimum), Windows® 7 with SP1 (minimum) 32-bit or 64-bit Operating System
- USB 2.0
- Microsoft .NET™ (installed with Data Manager)
- YSI USB drivers for the Professional Series Communications Saddle (installed with Data Manager)

Complete the following steps to update the ProODO probe software:

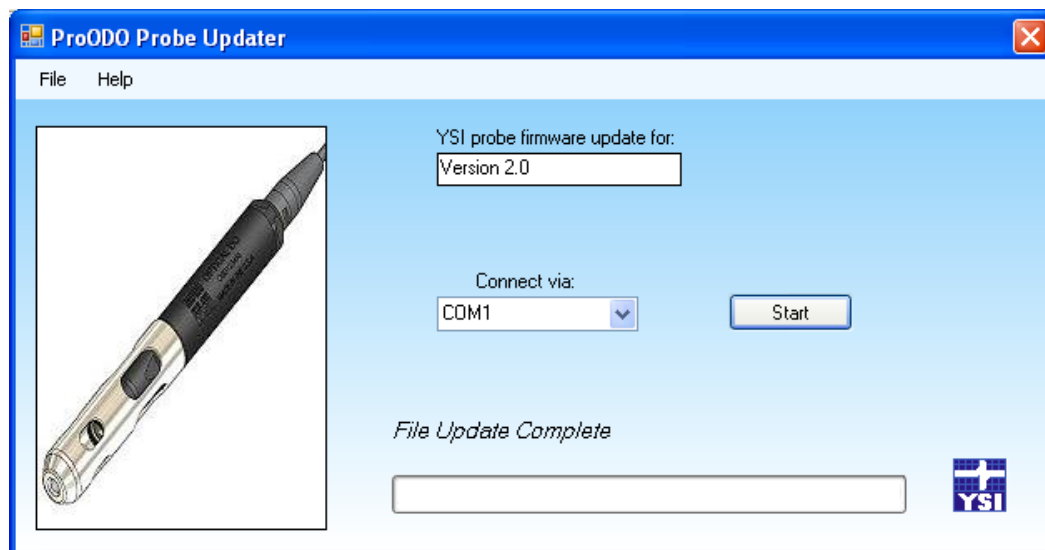
1. If not already installed, install the USB drivers for the Pro Comm II communications saddle and Data Manager on your PC via the CD included with your instrument or from www.ysi.com. After installation, connect the communication saddle to the PC's USB port with the USB cable provided. Windows may require you to step through two 'New Hardware Found' wizards in order to complete the USB driver installation.
2. From www.ysi.com, save the ProODO Code Updater - Probe file to you PC.
3. Once the file is downloaded, extract the file from the zip file to a directory on your PC
4. Attach the ProComm II saddle to the PC's USB port with the USB cable provided. Next, connect the saddle to the ProODO instrument and then turn the instrument on.
5. Run the "ProODO Code Updater - Probe application" file from the location you unzipped the files to. The ProODO Probe Updater application window will appear after a few seconds:





6. Within the Updater program, select the Com Port assigned to the Professional Series saddle from the drop down menu labeled “Connect via”. If necessary, the Com Port assignment can be determined or reassigned from the PC’s Device Manager. PLEASE NOTE: THE COM PORT MUST BE COM 8 OR LOWER FOR THE UPDATER PROGRAM TO FUNCTION.
7. The message ‘COM ports detected’, will change to ‘Loading’ and a progress bar along the bottom of the window will display the file transfer progress:

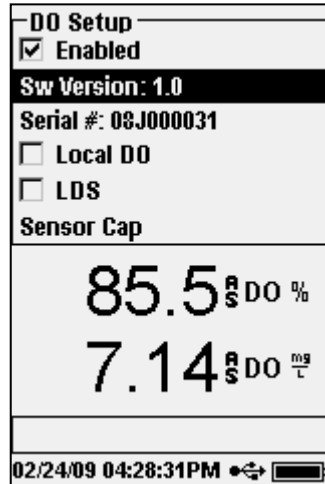


8. If an error occurs, it will be reported in the message area and the progress bar will stop.
9. Once the file transfer is complete, ‘File Update Complete’ will display in the message area, see below. You may exit the Updater program and disconnect the instrument from the saddle.

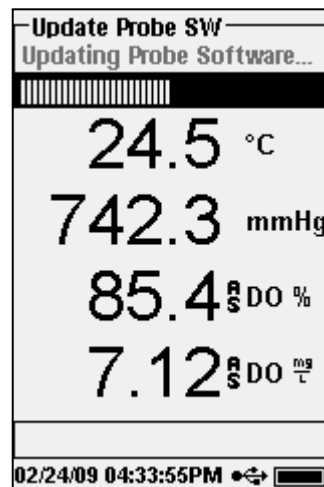
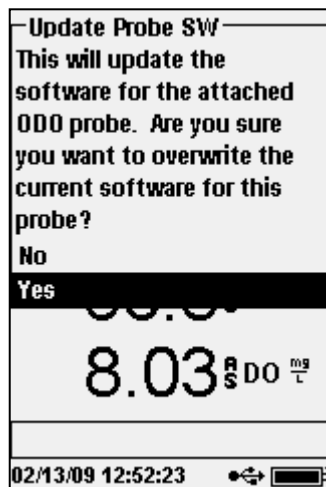


10. If not already connected, connect the ProODO probe/cable assembly that requires updated to the ProODO instrument that just received the new probe firmware from the PC.

11. Press the System  key and ensure Auto Shutoff is set to **Off**. If necessary, highlight **Auto Shutoff**, press enter and use the numeric entry screen to set the Auto Shutoff to zero. This will disable the Auto Shutoff feature.
12. Press the Probe , highlight **DO**, and press enter.
13. Highlight **Sw Version** and press enter.



14. All available probe software versions will be listed. Highlight the ProODO probe software you wish to use from the list and press enter. A message will display asking to confirm the update. (see left figure below) Highlight "Yes" and press enter. The probe updater will begin and a progress bar will display. (see right figure below) The update should be completed in approximately 5 minutes. **IMPORTANT:** The instrument and probe must remain powered on during the entire upgrade process.



15. When the update completes, the instrument will display the following message: Probe Software Updated! If this message does not display or an error occurs, perform the update again beginning at Step 10. If successful, press enter or Esc to exit the Probe Updater menu in the instrument. You can confirm the new Sw version by viewing the DO Probe Setup menu described above. If you have problems, please contact YSI: Tel: +1 937-767-7241 or email: environmental@ysi.com.