



a xylem brand

Data Manager Installation and Update Instructions

These instructions describe how to update or install Data Manager desktop software from YSI's website. Failure to follow these instructions may cause you to lose data already on your PC which was downloaded from your Pro Series instrument. Additionally, there is a small installation troubleshooting section at the end of this document.

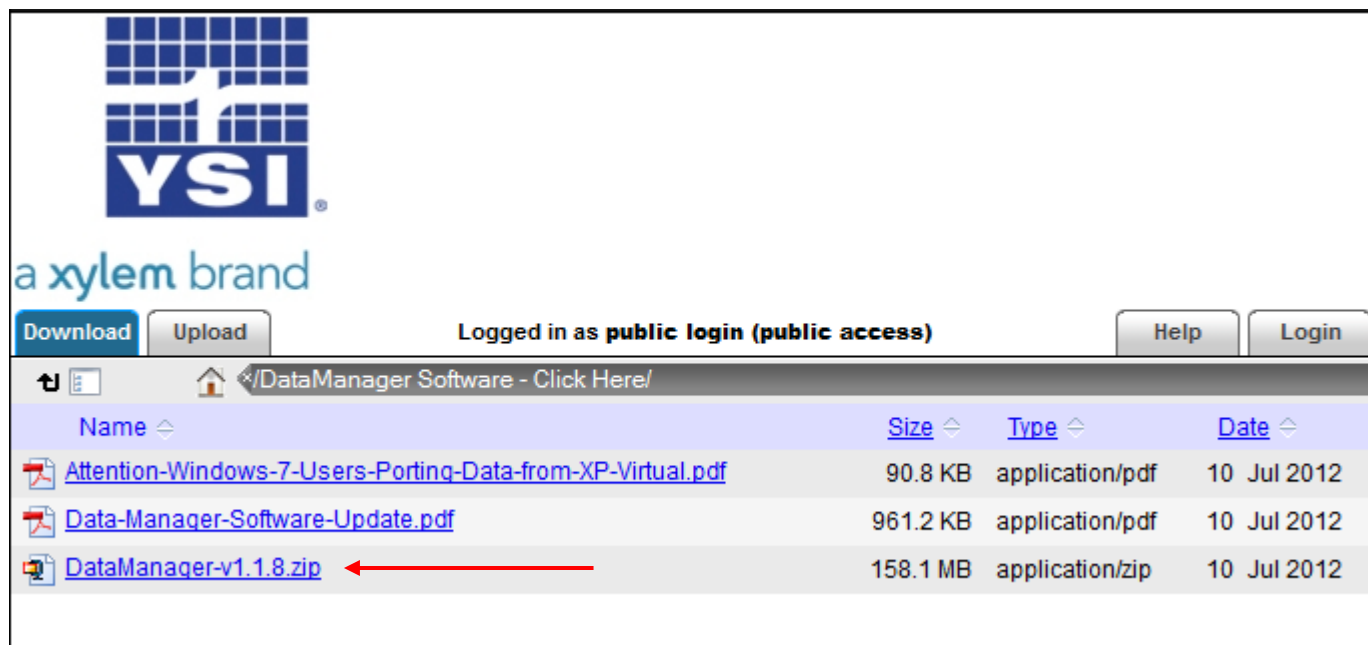
Minimum PC system requirements are:

- Windows® 2000 with SP4 (minimum), XP with SP2 (minimum), Windows® 7 with SP1 (minimum) 32-bit or 64-bit Operating System
- 300 MHz or higher Pentium-compatible CPU
- 128 MB of RAM or higher
- 80 MB or more of free hard-disk space
- USB 2.0
- Microsoft .NET (installed with Data Manager)

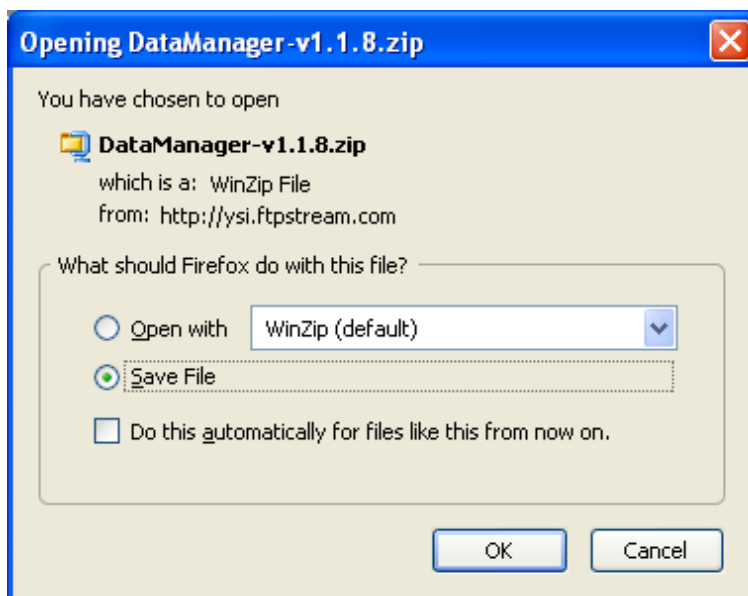
1. Go to <http://www.ysi.com/software.php> . You will need to log into the website or create login credentials to proceed with the download. (Click login or Register) Once logged in, download the Data Manager Software. During this process you will be redirected to YSI's FTP site. Click on the DataManager Software Folder



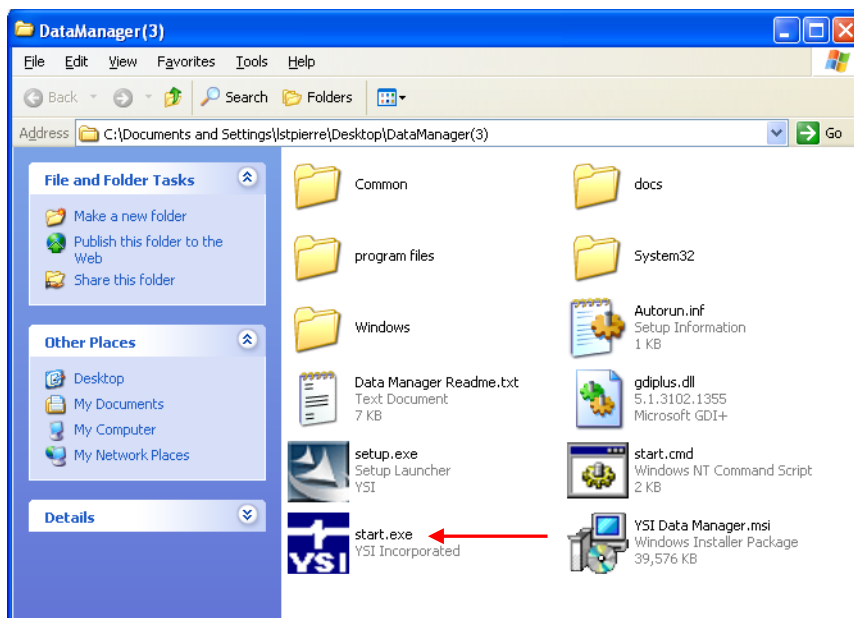
2. Next click the DataManager Download link. (In this example it is v1.1.8)



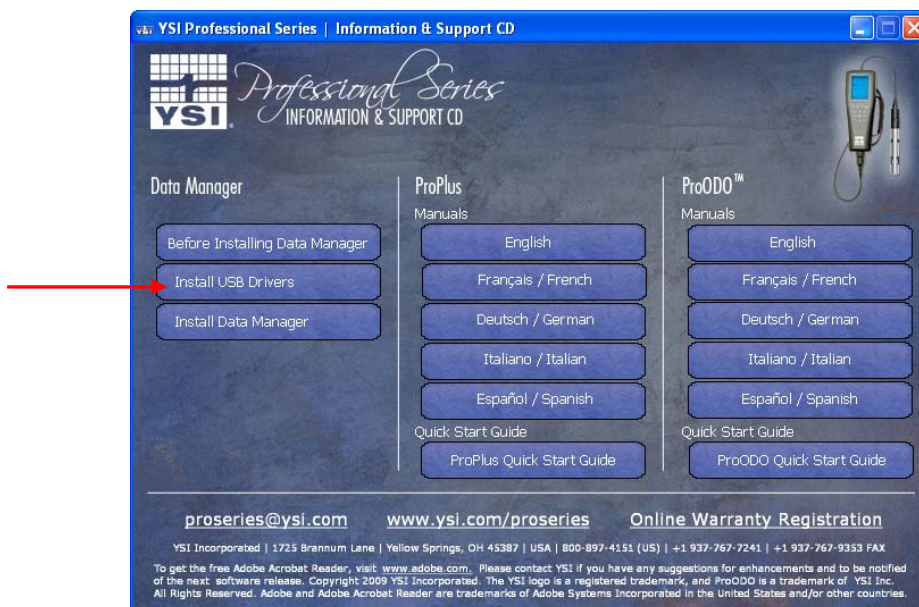
3. A new window may open or you may see a message pop up indicating a download is being requested. Be sure to save the file to your PC. The download will likely take several minutes. After saving the file, unzip or extract the contents.



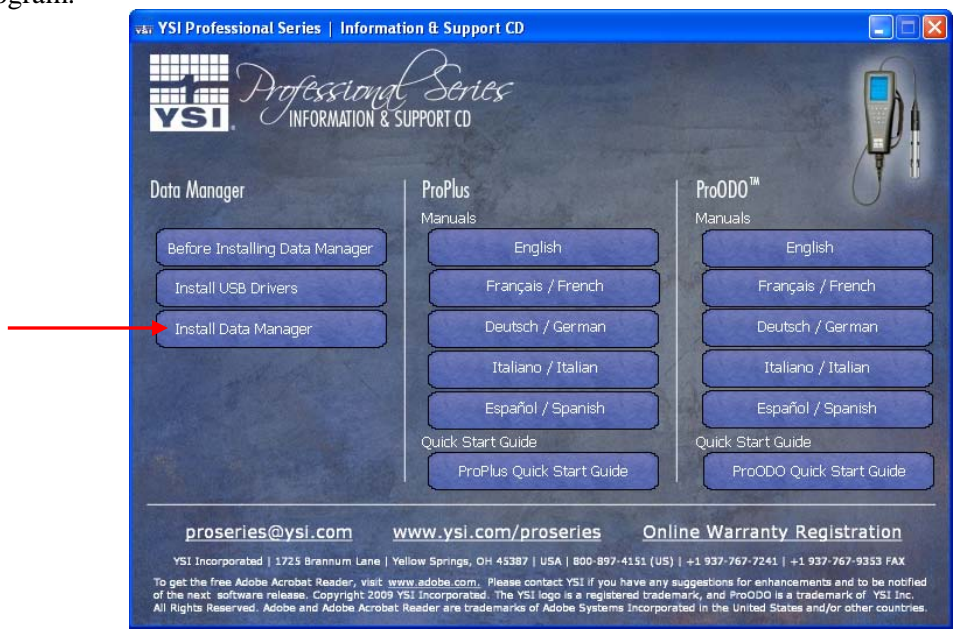
4. Navigate to the location on your PC where the file was unzipped and click on the start.exe file.



5. The Data Manager Autorun screen will open. If installing Data Manager for the first time, click on the Install USB Drivers button first. Otherwise proceed to the next step. This will install the drivers for the Pro Series Communication Saddle. It is necessary to install the drivers prior to connecting the saddle to your PC.



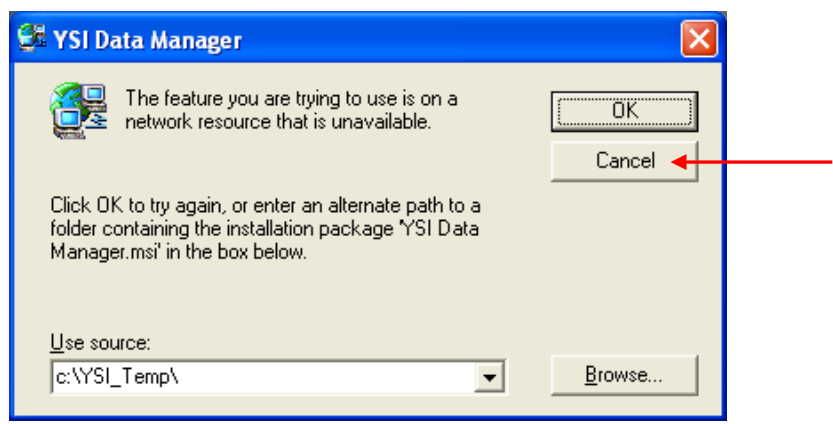
- Next, click on the Install Data Manager button. This will install Data Manager or update your existing Data Manager program.



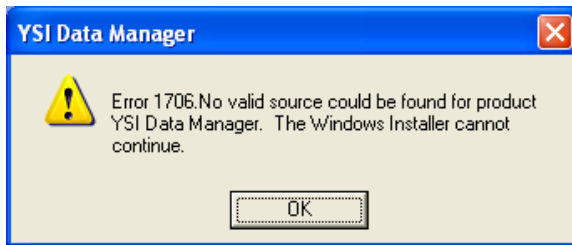
- Once DataManager is installed, you can proceed with connecting the saddle to the PC with the instrument detached. This will finish the saddle driver installation. Finally, attach the instrument to the saddle and open DataManager.

Troubleshooting Data Manager Installation

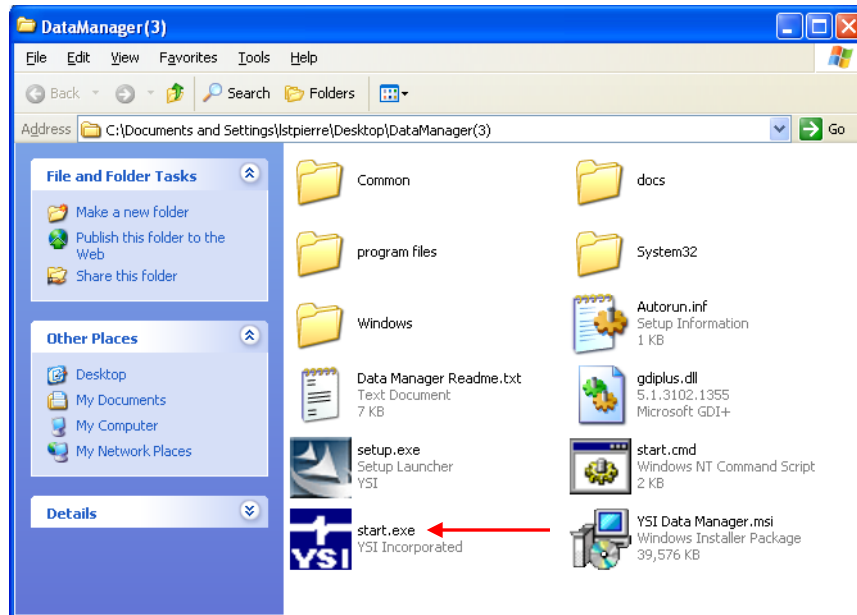
After completing the installation, click on the Data Manager desktop icon. If Data Manager launches and runs normally, the installation is complete. If the following window opens, perform the following steps to complete the installation.



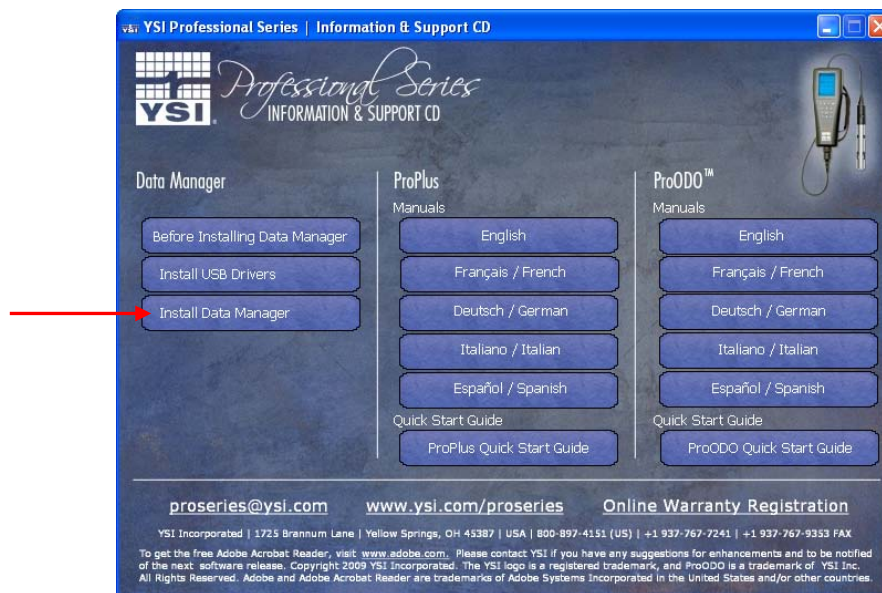
- Click the **Cancel** button on the above window. This will open the following error messages. Click **OK** on both messages.



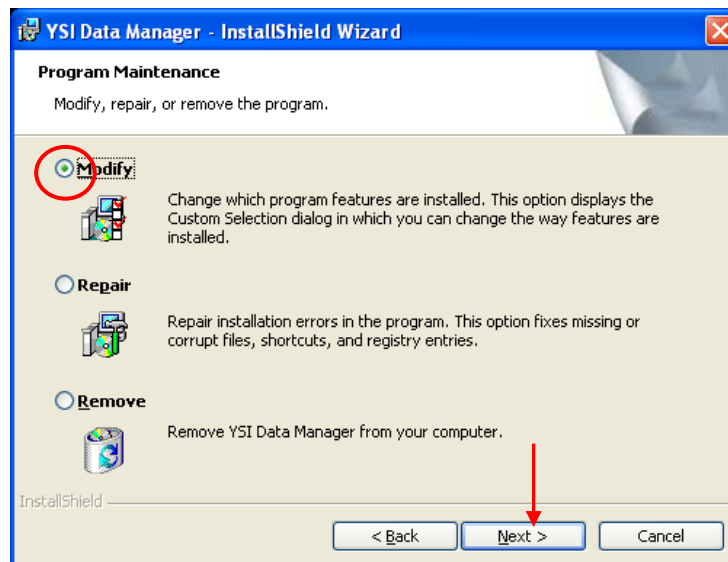
2. Navigate to the location on your PC where the Data Manager installation file was unzipped and click on the start.exe file. This will open the Data Manager autorun screen.



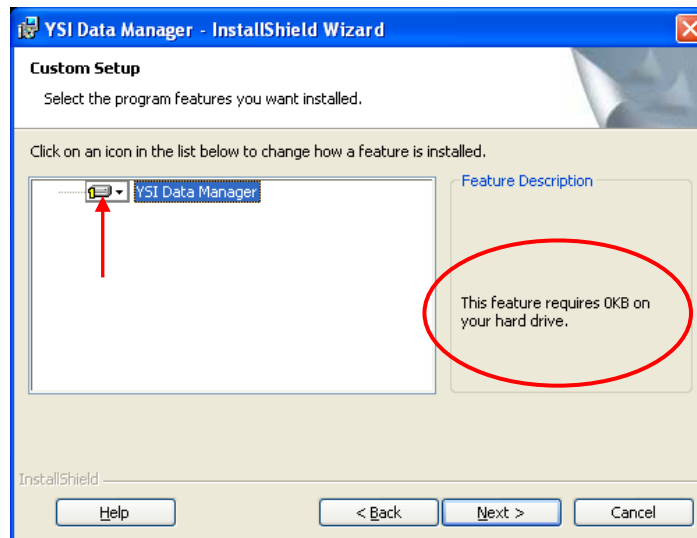
3. Click the Install Data Manager button.



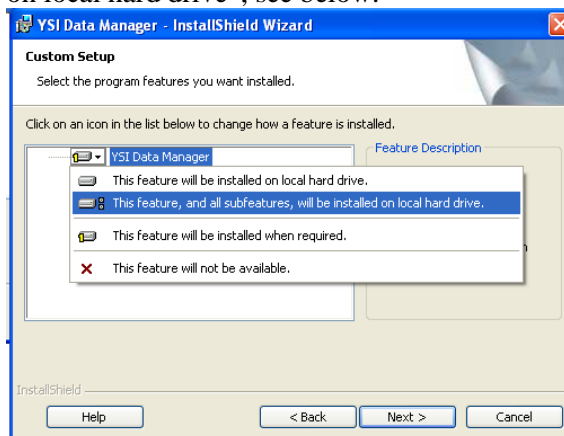
4. The following window will open. Leave **Modify** selected and click **Next**.



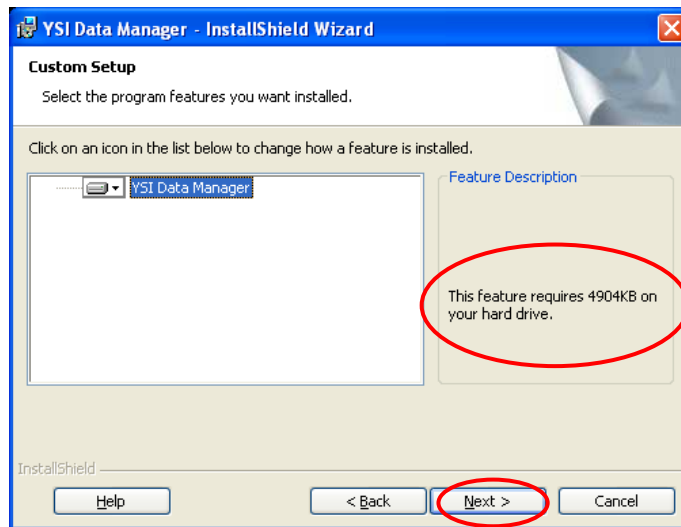
5. The following window will open. Notice that there is a yellow 1 on the icon and that the feature requires 0KB on your hard drive.



6. Click on the icon with the yellow 1 to open a drop down menu. In the drop down menu, select “This feature, and all sub features, will be installed on local hard drive”, see below.



7. Once complete the window should look like the example below where the yellow 1 is removed and 4904KB is required on your hard drive. Click **Next**.



8. Complete the installation by clicking on the **Install** button. Once complete the latest version of Data Manager will be completely installed and functional when opened.

If you have problems accessing the DataManager software or Retrieving Files from the instrument and the “File I/O” error message appears, right click the DataManager icon from your desktop and go to Properties. Click the Compatibility Tab and then check the box ‘Run this program as an administrator’. Restart DataManager and the problem will be resolved.

