



STORM CENTRAL

DATA HOSTING SOLUTION

Storm Central is a cloud hosted solution that allows you to view and download data from any computer or mobile device with an Internet connection. Data from the data logger is pushed to Storm Central on regularly scheduled intervals. Analyzing near real-time data is made simple in graphical, as well as tabular format. This platform provides an easy-to-use, simple approach for remote hydrological and meteorological data collection.



Storm Central

KEY FEATURES

- Automated data push from data logger to Storm Central
- Telemetry includes cellular modems, GOES communication, and other options
- Provides cloud based data collection through Storm Central
- Compatible with many third party data loggers (including Campbell Scientific)
- Custom report delivery from Storm Central to remote server
- Data is secure and backed up off site



a xylem brand

FEATURES / BENEFITS

Storm Central was built with simplicity in mind. A wide variety of features such as near real-time data display, and custom alarm notifications can save you time and prevent costly visits to your site. Storm Central has revolutionized the data collection process, eliminating the need to travel to the site for data download.

Alarm Notifications

Generate simple-to-complex alarm conditions based on the data collected, and the parameters you provide. Icons on your map can change colors and notifications via e-mail and/or SMS (text message) can be sent, alerting you of an alarm condition.

Report Generation

Create reports to be automatically sent via FTP or email. With the email function, reports can be forwarded to multiple users simultaneously. Data can also be merged from multiple stations to create unique reports.

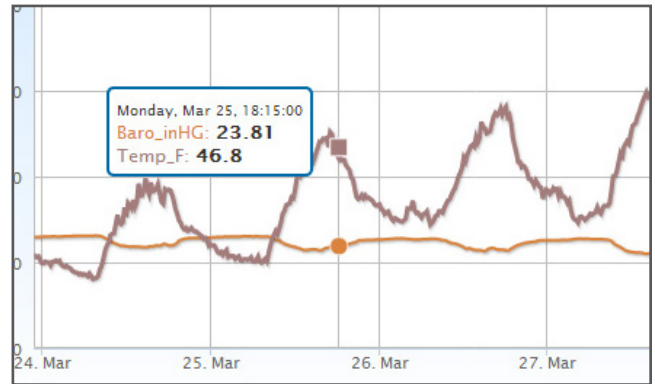
Graphical and Tabular Data Display

Once data has been pushed from the data logger and stored in Storm Central, it is immediately visible within the simple and intuitive Storm Central interface. Data is presented graphically as well as tabularly on the same page.

Telemetry Options

Cell: Data is pushed from the data logger to Storm Central via cell modem. This reduces the power requirement at the remote stations.

GOES: Storm Central can also retrieve and display data from GOES sites using YSI GOES data formats. Decoding of both Psuedo-Binary and ASCII (SHEF) formats is fully supported. Setting up a GOES site is a simple process.



Storm Central Graphical Data Display

ite	Time	Sys_TempF	RH	WS- WD(WS)	WS- WD(WD)	Slr_Wm2
/2013	09:00:00	47.30	69.664	0.000	0.120	282.73
/2013	08:45:00	42.80	63.888	0.000	0.110	127.78
/2013	08:30:00	36.50	74.417	0.000	0.110	113.27
/2013	08:15:00	32.90	74.525	0.000	0.100	117.70
/2013	08:00:00	29.30	84.342	0.000	0.120	76.50
/2013	07:45:00	29.30	83.739	0.000	0.100	22.76
/2013	07:30:00	29.75	86.057	0.000	0.110	13.26
/2013	07:15:00	33.35	83.554	0.000	0.110	5.93
/2013	07:00:00	32.90	79.216	0.000	0.110	2.80
/2013	06:45:00	32.90	69.153	0.000	0.100	2.77
/2013	06:30:00	32.90	74.948	0.000	0.100	2.76
/2013	06:15:00	32.90	77.308	0.000	0.100	2.76
/2013	06:00:00	32.90	80.109	0.000	0.110	2.77

Storm Central Tabular Data Display