



a xylem brand

Professional Plus Software Update Instructions

These instructions describe how to update the Professional Plus software to version 3.11. Minimum PC system requirements are:

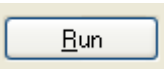
- Windows® 2000 with SP4 (minimum) or XP with SP2 (minimum) Operating System
- USB 2.0
- Microsoft .NET™ (installed with Data Manager)
- YSI USB drivers for the Professional Series Communications Saddle (installed with Data Manager)

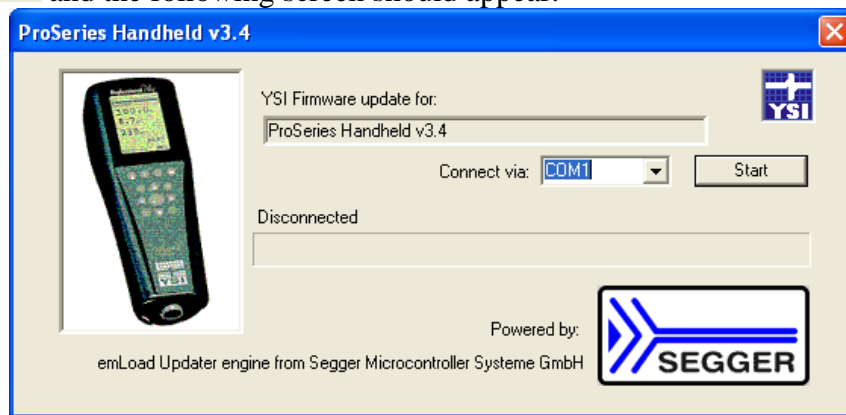
Complete the following steps to update a Pro Plus handheld to software version 3.11:


1. If not already installed, install the USB drivers for the Pro Comm II communications saddle and Data Manager on your PC via the CD that was included with your instrument. After installation, connect the communication saddle to the Pro Plus and then connect the saddle to the PC's USB port with the USB cable provided. Windows may require you to step through two 'New Hardware Found' wizards in order to complete the USB driver installation. Once complete, remove the instrument from the saddle and disconnect the saddle from the PC.
2. From www.ysi.com, save the ProPlus v3.11 Updater.zip file to your PC. There are six different files available, each with a different language combination. It is only necessary to download the one file you need. The language combination options include:
 - English, Spanish, and French
 - English, French, and German
 - English and Italian
 - English, Japanese, and Chinese
 - English and Norwegian
 - English, Spanish, and Portuguese
 - English, Polish, and Turkish
3. Extract the file from the zip file to a directory on your PC.
4. Attach the ProSeries saddle to the PC's USB port with the USB cable provided. Next, connect the saddle to the Pro Plus instrument and then turn the instrument off.

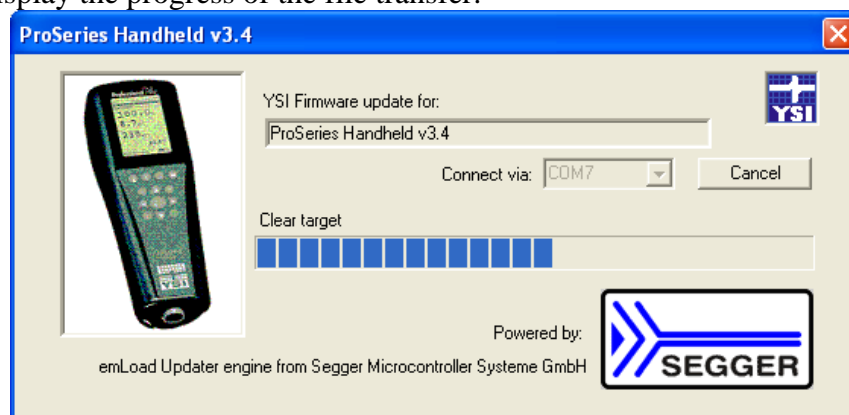
5. Run the ProPlus v3.11.exe file from the location you unzipped the file to. Depending on your version of Windows, you may get a security warning screen as shown below.



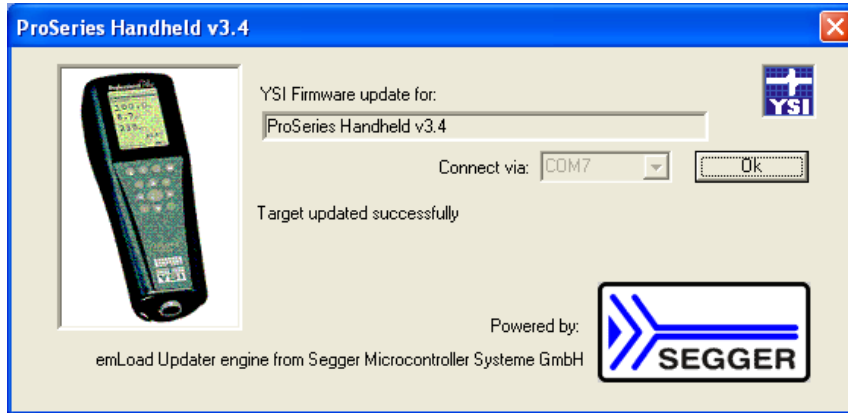
6. Select  and the following screen should appear:




7. In the Updater program, select the Com Port assigned to the Professional Series saddle from the drop down menu labeled "Connect via". If necessary, the Com Port assignment can be determined from the PC's Device Manager.
8. Press the Updater program's  button.
9. Turn the instrument on.
10. The Updater software will begin the download process and a progress bar along the bottom of the window will display the progress of the file transfer:



11. The update process will take approximately 5 minutes. When the update is complete, the application will display “Target updated successfully”, see below. You may exit the Updater program and disconnect the instrument from the saddle.



12. The new software version can be verified by pressing the System  key on the Pro Plus instrument and looking at the Sw Version displayed in the System menu:

