

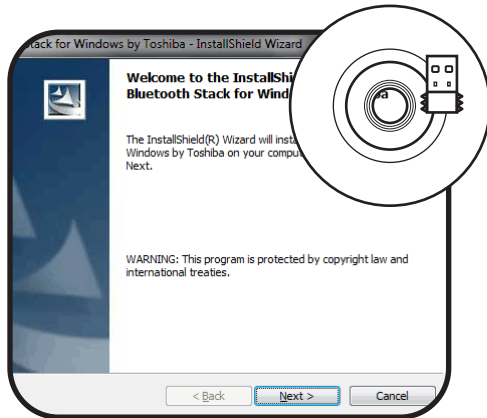


Quick Start Guide

Power and Communication System (PACS)

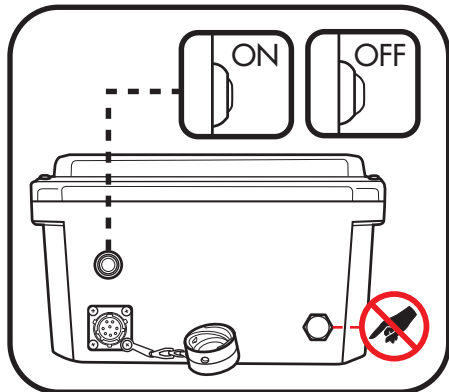
A YSI PACS allows users to power their sondes and wirelessly communicate with them. The solar panel and 12 V reserve battery supply continuous power; a *Bluetooth*[®] wireless link provides wireless communication to users within 215 feet. Once properly installed, PACS will provide reliable power for extended deployments and a simple platform from which users can collect data at a distance.

Before installation, please read the PACS User Guide for important notes and additional information. Direct any questions to YSI Technical Support at systems@ysi.com or call 1.508.748.0366



1 Install *Bluetooth* wireless drivers.

On a PC, install the *Bluetooth* dongle's drivers from the CD that came with it. Insert the CD into the computer's CD-ROM drive, then insert the dongle into an open USB slot on your computer. Follow the installation software's prompts to complete the installation process.



2 Power on PACS and connect sonde.

Unscrew the protective cap from the PACS's MS-8 connector, and plug in the sonde cable. To power the system, press the small black button on the connector end of the enclosure. The button will be slightly recessed when PACS is powered on.

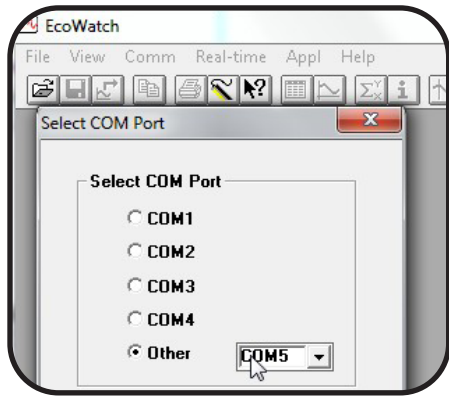
NOTE: Do not touch the vent located on the connector end of the enclosure.



3 Establish a wireless connection.

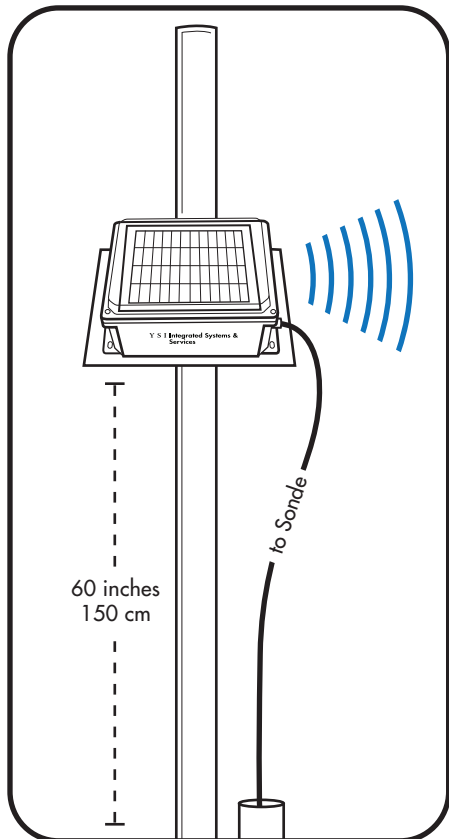
- On the PC, select Start > All Programs > *Bluetooth* > *Bluetooth Settings*.
- Click the "New Connection" button.
- Select Custom.
- Follow the on screen prompts to establish the connection.

NOTE: 6-series users must select a COM Port between 2-9 in order to connect to a hyperterminal or EcoWatch. Be sure to record the selected COM Port for future use.



4 Establish Hyperterminal/EcoWatch connection; enter the Passkey (2738).

On the connected PC, open an EcoWatch or hyperterminal connection. A security window will appear and prompt the user to enter a passkey. The passkey is 2738. Using the COM Port selected in Step 3, connect to and operate the sonde the same as through a standard, wired connection.



5 Mount PACS in the field.

When mounting PACS, users should consider several factors for optimal system performance.

- **Height from ground.** Users should mount PACS approximately 60 in (150 cm) from the ground.
- **Line of sight.** Users should be able to connect to PACS via *Bluetooth* wireless with no obstructions.
- **Solar exposure.** PACS should face in the direction of maximum exposure: south in the Northern Hemisphere. The optional mounting kit also secures PACS to a pole at the ideal angle for best exposure.
- **User's distance during *Bluetooth* Link.** PACS and the included *Bluetooth* dongle provide a wireless connection at distances up to 215 feet in ideal conditions. Always test your individual system in the deployment environment to determine its maximum connection distance.
- **PACS enclosure orientation.** Mount PACS so that the connectors face toward the location where the user will connect via *Bluetooth* wireless. The PACS's *Bluetooth* link transmits from the connector end of the enclosure.

