



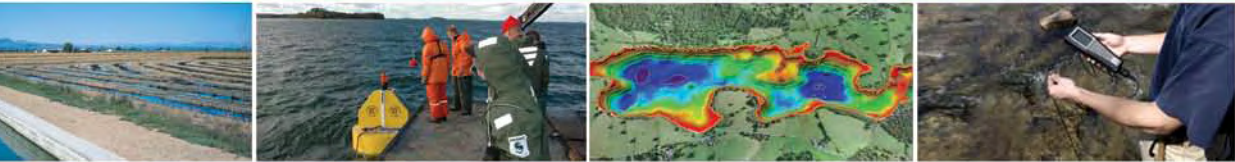
Rental & Services



water monitoring solutions

- Aquaculture**
- Coasts & Estuaries**
- Groundwater**
- Lakes**
- Oceans**
- Ports & Harbors**
- Reservoirs**
- Rivers & Streams**
- Wastewater**
- Wetlands**

Y S I Hydrodata Ltd.



“Never doubt that a small group of thoughtful, committed citizens can change the world.”

Margaret Mead



Water is our planet’s most precious natural resource. And we must be diligent in measuring and protecting it.

YSI and its divisions take great pride in designing, building, and servicing the high-precision instruments that help you collect accurate and reliable water quality and velocity data.

Our instruments and accessories are field-proven for applications such as:

- Aquaculture**
- Coasts & Estuaries**
- Groundwater**
- Lakes**
- Oceans**
- Ports & Harbors**
- Reservoirs**
- Rivers & Streams**
- Wastewater**
- Wetlands**



Why Rent YSI?

For 60 years, YSI, an employee-owned company, has pioneered the development of high-quality instrumentation for use in natural waters.

Our technology saves you time:

Meeting the global need for improved environmental monitoring requires fewer technical personnel and a lower cost of ownership. YSI provides accurate sampling and turn-key monitoring solutions, equipment that is easy to use and install, and intuitive interfaces.

Our reliability improves efficiency:

Successful monitoring efforts depend on accurate and defensible data. We deliver reliable instruments and continuously develop safeguards and system checks to ensure you obtain the highest-quality data as quickly as possible.

Our employees understand your challenges:

Our staff has extensive field experience which helps them provide viable solutions and hands-on support for your monitoring challenges.

Our customers can reach us: With an office in Letchworth, UK and other offices throughout the world, our customers can always keep in touch.

Contents

Rental:

Sampling Instruments 4-5
Water Quality Selection Guide .. 6
Multiparameter Sondes 7-8
Velocity Selection Guide 9
Velocity & Current Meters ... 10-12

Services:

Buoy & Systems 13
Integrated Systems & Surveys... 14
Installation Services 15



Rental

Sampling and Testing Instruments

YSI's Professional Series family is a rugged line of instruments designed based on user feedback. You told us what you wanted, we listened—giving you instruments to lower your overall cost of ownership.

Applications

Groundwater
Wastewater
Aquaculture
Surface water

Parameters

Temperature
Dissolved oxygen
pH
ORP
Conductivity
Specific conductance
Salinity
Total dissolved solids
Resistivity
Barometric pressure
Ammonium/ammonia
Nitrate
Chloride

ysi.com/quatro



ProPlus Quatro

- Measures any combination of dissolved oxygen, pH, conductivity, ORP, ammonium, nitrate, chloride, salinity, total dissolved solids, barometric pressure, and resistivity
- Simultaneously displays dissolved oxygen, pH, conductivity, temperature, ORP, salinity, and TDS; GLP conforming data
- Features on-screen help, backlit display and keypad, user-replaceable cables and sensors, and auto-buffer recognition

ysi.com/proODO



ProODO® Digital Series

- Non-consumptive optical DO luminescent method eliminates the need for stirring
- Expanded DO range of 0-500%
- Field-rugged user-replaceable cables in lengths up to 100 meters
- Digital technology stores cal data in the sensor so you can place it on any ProODO instrument

ysi.com/pro20

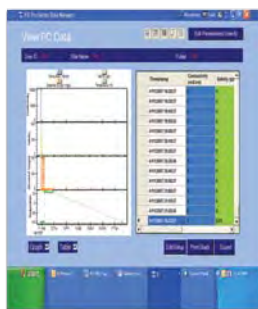


Pro20

- Measures dissolved oxygen, barometric pressure, and temperature
- Industry-leading DO response times: 95% in approximately 8 seconds
- Calibrate instrument in seconds with One Touch Cal

Data Manager Desktop Software

- Real-time studies, data storage, and instrument configurations
- Easy-to-use software to manage all data, set up instruments, or conduct real-time studies
- View graphical and tabular data
- USB connection powers the instrument
- Included with ProPlus and ProODO



For rental rates, enquire at +44 (0) 1462-673581 serviceuk@ysi.com



Rental

Sampling and Testing Instruments

ysi.com/levelscout ysi.com/photometers



level|scout

Applications

Groundwater
Wastewater
Aquaculture
Surface water
Industrial

Parameters

Temperature
Dissolved oxygen
pH
ORP
Conductivity
Level
Specific conductance
Salinity
Total dissolved solids
Resistivity
Barometric pressure
Ammonia
Hardness
Chlorine
Iron
Nitrate
Phosphate
Alkalinity and more

For rental rates,
enquire at
+44 (0) 1462-673581
serviceuk@ysi.com



9500 Photometer

- 100+ tests, including hardness, ammonia, calcium, nitrate, pH, copper, and more
- Simple, on-screen instructions
- Non-hazardous reagents with long shelf life
- 500 sample set memory and waterproof USB



Pro Series Accessories

- Soft- and hard-sided carrying cases
- Flow cells
- Flow cell mounting spike
- Belt clip
- Tripod clamp
- Probe weights
- Cable management kit

Ask one of our trained rental or service staff for the sampling set-up that best suits your needs.

Rental

Quick Select Guide

for water quality instruments

Parameters

Ammonium/ammonia*
 Blue-green algae
 Chloride*
 Chlorophyll
 Conductivity
 Depth
 Dissolved oxygen
 Dissolved oxygen,
 optical
 Level, vented
 Nitrate*
 Open channel flow**
 ORP
 PAR
 pH
 Resistivity**
 Rhodamine
 Salinity
 Specific conductance**
 Temperature
 Total dissolved solids**
 Turbidity
 Field-replaceable
 sensors
 Fits 2" wells
 Flow cell
 Internal memory
 Internal power
 RS-232 & SDI-12

| | 600XLM | 600 XLM-V2 | 6600V2 | 6920V2 | 6820V2 | ProPlus | ProODO | Level Scout |
|------------------------------|--------|------------|--------|--------|--------|---------|--------|-------------|
| Ammonium/ammonia* | ▲ | ▲ | □ | ■ | ■ | ● | ● | |
| Blue-green algae | | ■ | ■ | ■ | ■ | | | |
| Chloride* | ▲ | ▲ | □ | ■ | ■ | ● | ● | |
| Chlorophyll | | ■ | ■ | ■ | ■ | | | |
| Conductivity | ● | ● | ● | ● | ● | ● | ● | |
| Depth | ● | ● | ■ | ■ | ■ | ● | ● | |
| Dissolved oxygen | ● | | □ | □ | □ | | | |
| Dissolved oxygen, optical | | ■ | ■ | ■ | ■ | ● | ● | |
| Level, vented | ■ | ■ | | ■ | ■ | | | ● |
| Nitrate* | ▲ | ▲ | □ | ■ | ■ | ● | ● | |
| Open channel flow** | ■ | ■ | ■ | ■ | ■ | ● | ● | |
| ORP | ■ | ■ | ■ | ■ | ■ | ● | ● | |
| PAR | | | ▲ | | | | | |
| pH | ■ | ■ | ■ | ■ | ■ | ● | ● | |
| Resistivity** | ● | ● | ● | ● | ● | ● | ● | |
| Rhodamine | | ■ | ■ | ■ | ■ | | | |
| Salinity | ● | ● | ● | ● | ● | ● | ● | |
| Specific conductance** | ● | ● | ● | ● | ● | ● | ● | |
| Temperature | ● | ● | ● | ● | ● | ● | ● | ● |
| Total dissolved solids** | ● | ● | ● | ● | ● | ● | ● | |
| Turbidity | | ■ | ■ | ■ | ■ | ■ | | |
| Field-replaceable sensors | ● | ● | ● | ● | ● | ● | ● | |
| Fits 2" wells | ● | ● | | | | ● | ● | ● |
| Flow cell | ● | ● | ■ | ■ | ■ | ■ | ■ | |
| Internal memory | ● | ● | ● | ● | ● | ● | ● | ● |
| Internal power | ● | ● | ● | ● | ● | ● | ● | |
| RS-232 & SDI-12 | ● | ● | ● | ● | ● | ● | ● | ● |

● Standard ■ Customer Selectable ▲ Special Order
 □ Available only on 6600 V2-2 □ Available only on 6920 V2-1 or 6820 V2-1

* Freshwater only. ** Calculated parameters.

+44 (0) 1462-673581
 serviceuk@ysi.com



Rental

Multiparameter Sondes

for long-term monitoring

ysi.com/v2

YSI's 6-Series family includes versatile, multiparameter sondes designed for real-time environmental monitoring and extended deployment.



Applications

Unattended monitoring
Source water
Lake profiling
Dredging
Underway sampling
PAR studies
Algal bloom monitoring

Parameters

Conductivity
Temperature
Dissolved oxygen
Chlorophyll
Blue-green algae
Turbidity
Rhodamine
Depth
Vented level
pH
ORP
Nitrate
Ammonium
Chloride
PAR

6600 V2 sonde

- Largest sensor payload capability and longest battery life
- Choose between 2 and 4 optical ports for dissolved oxygen, blue-green algae, chlorophyll, rhodamine, and turbidity
- 6600 V2 and 6600EDS V2 are also available with a pH wiping system

6920 V2 sonde

- Economical, 15-parameter logging system
- Battery powered for long-term, *in situ* monitoring and profiling
- Choose between 1 and 2 optical ports

6820 V2 sonde

- Cost-effective sampling system with up to 15-parameter reporting capability
- Ideal for profiling and spot-checking
- Choose between 1 and 2 optical ports



Anti-Fouling Kits

- Copper-alloy components prevent the growth of biofouling
- Extends deployment periods by at least 3x
- Reduces your trips to the field for maintenance



For rental rates, enquire at
+44 (0) 1462-673581
serviceuk@ysi.com



Rental

Multiparameter Sondes

YSI 600 multiparameter sondes are designed for applications where a fewer number of parameters is required and size and price are of primary concern.

Applications

Short-term studies
Lake and stream sampling
Groundwater wells
Tide gauge measurements
Water level

Parameters

Conductivity
Temperature
Depth
Vented level
pH
ORP
Dissolved oxygen



600OMS and 600XLM sondes

- Ideal for water level monitoring as well as ground water and surface water monitoring
- Includes DO, temperature, and conductivity sensors and options to add pH or pH/ORP, depth, and vented level
- One optical sensor port for dissolved oxygen, blue-green algae, chlorophyll, rhodamine, or turbidity
- Offers batteries for unattended, *in situ* monitoring



650MDS (Multiparameter Display System)

- Connects to any 6-Series multiparameter instrument
- Easily log real-time data, calibrate, and set up sondes for deployment
- Upload data to a PC
- Optional barometer and GPS interface



Accessories

- Soft- and hard-sided carrying cases
- Flow cells
- Field cables
- Calibration solutions



Optical Sensors

ROX™ Dissolved Oxygen

- No stirring required
- Luminescence membrane lasts 12 months or more

Blue-green Algae

- Fresh water and coastal water versions
- Measures cells/mL

Chlorophyll

- Estimates phytoplankton concentrations through fluorescence

Turbidity

- High accuracy and resolution
- Unaffected by changes in ambient light

Rhodamine

- Dye trace studies

For rental rates, enquire at
+44 (0) 1462-673581
serviceuk@ysi.com

Rental

Quick Select Guide

for water velocity instruments

Applications

| | Flow Tracker | River Surveyor | Argonaut XR | Argonaut SW | Argonaut SL | Argonaut ADV | Micro ADV |
|--------------------------|--------------|----------------|-------------|-------------|-------------|--------------|-----------|
| Moving Vessel Discharge | | • | | | | | |
| Wading Discharge | • | • | | | | | |
| Irrigation Canals | • | • | | • | • | | |
| Open Channel Flow | • | • | • | • | • | • | |
| Velocity Indexing | • | • | • | • | • | • | |
| Pipes/Culverts | | | | • | | | |
| Streams & Rivers | • | • | • | • | • | • | |
| Storm Water | | | | • | • | • | |
| Marshes | • | | • | • | • | • | |
| Flood Alert | | | • | • | • | • | |
| Water Treatment | | | | • | • | • | |
| Water Supply | | | • | • | • | • | |
| Pollution Monitoring | | | • | • | • | • | |
| Low Flow | • | • | | • | | • | |
| Tidal/Marsh Studies | • | • | • | • | | • | |
| Mixing | • | • | • | | | • | |
| Fish Screen | • | | | | | • | |
| Flow/Current Field | • | • | • | | | • | |
| Bathymetry | | • | | | | | |
| Reservoir Mapping | | • | | | | | |
| Offshore Platforms | | | | | • | | |
| Near-shore Current | | | • | | • | | |
| Estuaries/Shallow | | | • | | • | | |
| Ship Berthing | | | • | | • | | |
| Tide/Elevation | | | • | | • | | |
| Non-directional Waves | | | • | | • | | |
| Flumes | • | | | | | | • |
| Model Verification | • | | | | | | • |
| Directional Wave Studies | | | | | | | • |

+44 (0) 1462-673581
serviceuk@ysi.com

Rental

Velocity and Current Meters

sontek.com/hydrology.html

sontek.com/laboratory.html

SonTek/YSI products include acoustic Doppler profilers and other systems for measuring water velocity and flow in surface water applications such as rivers, lakes, and canals.

Applications

Discharge calculation
Stream indexing
Real-time flow
Irrigation
Wastewater effluent



FlowTracker Handheld ADV

- Wading discharge or velocity measurements in streams, weirs, flumes, and open channels
- Easily attaches to top-setting wading rod
- SmartQC for instant feedback on data quality
- Supports multiple river discharge methods and current velocity measurements
- Output data directly into FlowPack
- Multi-language



RiverSurveyor

- Discharge and bathymetry measurement
- Accurately measures discharge from moving boats
- Computes complete 3-D velocity profile and bathymetric channel cross-section in minutes
- Optional tethered platform for measurements from bridges
- Supports bottom-tracking and DGPS



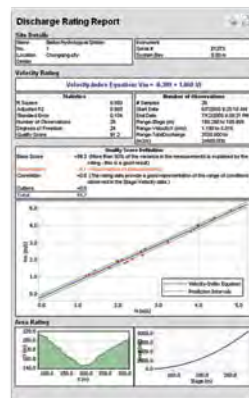
Remote Controlled Boat for ADP

- Integrated boat for RiverSurveyor S5 or M9 and older systems (4")
- Useful for bathymetry and discharge measurements in rivers/lakes where personal safety is an issue

- Compact design—easily transported in car boot
- Single-person launch and recovery
- Max. speed 2 m/s
- 12 v power lead-acid battery

FlowPack Software

- Store flow, velocity, and stage measurements in one software
- Generate velocity-index ratings and comprehensive reports



For rental rates, enquire at +44 (0) 1462-673581 serviceuk@ysi.com

Rental

Velocity and Current Meters



Argonaut®-XR

- Affordable and easy-to-use current profiler
- Automatically adjusts sampling volume with changing tide level or river stage
- Bottom-mounted for near-shore deployments
- Wave height and spectra



Argonaut®-SL

- 2D, side-looking velocity, level, and flow meter
- Calculates flow/discharge via theoretical or index-velocity ratings
- Installs on side of river or open channel for easy access and quick maintenance
- Measures remotely, avoiding flow interference from piers or pilings



Argonaut®-SW

- Up-looking velocity, level, and flow meter for shallow water: 1 to 16 ft (0.3 to 5 m) deep
- Automatically accounts for stratified velocity found in reversing or complex flow conditions
- Mounted on bottom of channel, stream, or pipe
- Optional outputs: SDI-12, Modbus, analog (current or voltage), and RS-422

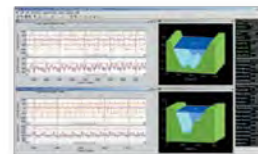


Canal Mounts

- Easy solution for open channels
- Ask one of our trained technicians about mounting options, as well as accessories and options to create a complete turn-key solution

Applications

Discharge calculation
Stream indexing
Real-time flow
Irrigation



ViewArgonaut Software

- Data post-processing and real-time evaluation
- Works with all SonTek Argonauts

For rental rates,
enquire at
+44 (0) 1462-673581
serviceuk@ysi.com



Rental

Velocity and Current Meters

sontek.com/oceanography.html

SonTek/YSI products include high-resolution, single-point acoustic Doppler velocimeters, profilers, and current meters. These systems measure water currents, waves, tides, and other fluid dynamic parameters in oceans, laboratories, and along coasts.

Applications

Bottom boundary
Currents
Discharge
Tide level
Flow/low flow
Sediment transport
Flumes
Near-shore monitoring
Waves



Argonaut®-ADV

- Single-point, shallow-water flow monitoring
- Rugged ADV head and internal battery pack for autonomous deployment
- Ideal for streams, marshes, lakes, and water treatment facilities



MicroADV

- Three-axis velocity measurement for hydraulics research in labs
- Sampling rates up to 50 Hz; sampling volume 0.09 cc
- Excellent for low-flow and turbulence studies



Triton-ADV

- Measures currents, directional waves, and tides
- High-accuracy, single-point current meter with AutoVelocity technology
- Integrated pressure, temperature, and compass/tilt sensors in a compact, lightweight package

Custom Rental

Portable Water Sampler

- The light, weatherproof 2002 AWS delivers maximum accuracy and easily handles all sampling applications
- No modules required
- Fully programmable
- Ask about custom integration with YSI sondes and SonTek flow measurement equipment



For rental rates,
enquire at
+44 (0) 1462-673581
serviceuk@ysi.com



Services

Buoy Systems

ysi.com/systems

YSI Hydrodata is available to service your natural-resource monitoring system, ranging from single buoys to large-scale, real-time monitoring networks.

Applications

Baseline studies
Dredging
Emergency response
Fisheries
Non-point source/TMDL
Point source/discharge
Stormwater & CSO
Source water
Lakes
Estuaries
Bays
Continental shelf

Parameters

Water quality
MET
Currents
Nutrients
PAR
Hydrocarbons



Environmental Monitoring Modules

- Coastal buoys designed for high energy environments and large sensor payloads
- Proven design with deployments around the world
- Standard wave, current, and water quality solution without customization
- In-house design and manufacturing for solutions with alternative telemetry, prototype instruments, larger hulls, and custom software solutions
- Engineered for instrumentation monitoring, using oceanographic-grade materials
- Inland buoys for lakes and rivers
- Can be deployed by several people in small watercraft
- Designed for years of reliable operation
- Tamper and vandal resistant for public areas
- Batteries situated to lower center of gravity

- Small buoy can be deployed by two people in small boat
- Integral deployment tube protects multiparameter water quality sonde
- Innovative design uses submersible rechargeable battery pack as buoy ballast weight
- One base station can collect data from network of buoys
- Perfect for short-term, project-based deployments

Managed Solutions

- Rented total solution
- Fixed monthly costs
- Design
- Installation
- Decommissioning
- Maintenance and calibration
- Custom web views
- Telemetry
- Solar power
- Automated data reports, alarms, and alerts

+44 (0) 1462-673581
serviceuk@ysi.com

Services

Integrated Systems & Bathymetric Surveys

ysi.com/econet

ysi.com/ecomapper

YSI Hydrodata can quickly deliver proven standard solutions or work with you to develop a custom solution for unique monitoring applications.

Applications

Remote data delivery
Real-time alerts
Reservoir monitoring
Aquaculture
Algal bloom monitoring
Discharge
Bottom mapping
Drinking water intake

Parameters

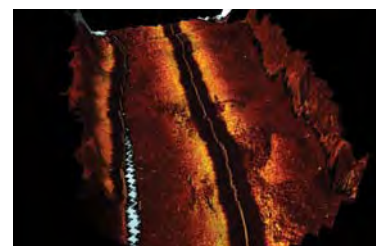
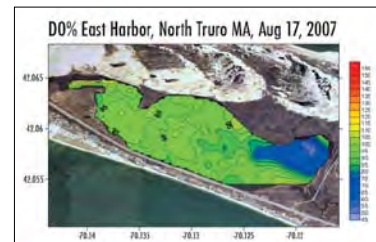
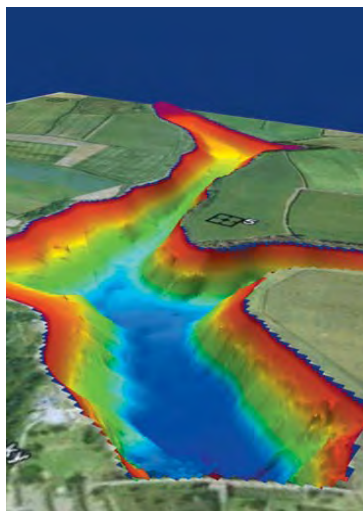
Water quality
MET
Currents
Nutrients
PAR
Bathymetry
Side-scan sonar

+44 (0) 1462-673581
serviceuk@ysi.com



EcoNet™

- Deliver remote data to web or workstation
- Automated data reports, alarms, and alerts
- No programming necessary; changes made through graphic interface
- Add up to 15 sensors and more than 50 parameters to a single station
- Simplify your monitoring network with hosting, delivery, reporting, and maintenance services from a single supplier



EcoMapper™ AUV

- Completely autonomous underwater vehicle
- Deployable by one person
- Easy-to-use mission planning software
- Complete survey
- Mission planning
- 3-D imaging

- Water quality and bathymetric mapping of large areas
- Side-scan sonar
- Volume calculation
- Current surveys
- RTK total station
- Reference datum

ysi.com/profilers



Vertical profiling system

- Monitor water quality at various depths
- Continuously monitor stratification and mixing without trips to the field
- Detect short-term events—storms, sediment transport, algal blooms—anywhere in water column
- 24/7 automated, unattended profiling helps track changes with complete data set
- Uses one sonde to profile entire water column reduces equipment maintenance

Services

Installation Services

ysihydrodata.com/services.htm

A successful environmental monitoring project requires more than the right equipment.

YSI Hydrodata offers a range of services to help you achieve optimal results.



We can partner with you to provide:

- Site evaluation
- Systems configuration
- Integration and testing
- Engineering and installation
- On-site training
- Data collection and delivery
- Extended support and service contracts
- Velocity indexing
- Hydrographic surveying

Instrument Calibration

YSI Hydrodata offers calibration and service facilities for the full range of YSI and SonTek instruments.

If you have any questions about service or calibration on these or any other instruments, please contact us. Our qualified service team will be happy to help you.



+44 (0) 1462-673581
serviceuk@ysi.com



Y S I Hydrodata
Monitoring the Environment®

Tel: 1462 673581
serviceuk@ysi.com
www.yasihydrodata.com

YSI Hydrodata offers first-class service across Europe.

YSI Hydrodata has a wide range of products for many specialist applications. If you have an application that requires integration of instruments, please contact our office and ask to speak to a technical advisor.

YSI Hydrodata Ltd.
Unit 2 Focal Point
Lacerta Courts
Works Road
Letchworth
SG6 1FJ

All trademarks herein are registered to YSI Incorporated unless otherwise noted.

©2009 YSI Incorporated
Who's Minding the Planet?®
E28-02 1109

CE



Third-Party Verification You Can Trust

YSI is the only company in its field to apply for and receive verification from the US EPA's Environmental Technology Verification Program. Independent tests on six sensors demonstrated the accuracy of YSI sensor technology when compared to established standards in saltwater and freshwater. Find information on performance characteristics at www.epa.gov/etv.*



The Alliance for Coastal Technologies (ACT) has tested the following YSI products under real-world conditions: 6600EDS V2 sonde, 6600 V2 sonde, 6136 turbidity sensor, 6025 chlorophyll sensor, RapidPulse DO sensor, and 9600 nitrate monitor. Find evaluation reports at www.act-us.info.



YSI multiparameter sondes have achieved the UK Environment Agency MCERTS certification for continuous water monitoring. MCERTS assures users of certified instruments that these meet performance conditions set out in international standards and the EC Directives. Find more information at www.mcerts.net.

*Use of the ETV name or logo does not imply approval of this product nor does it make any explicit or implied warranties or guarantees as to product performance.